

Early Childhood Colorado Framework

A SHARED VISION

For more information visit earlychildhoodframework.org

ADOPTED JULY 2008 | UPDATED JULY 2015

Core Principles

The Early Childhood Colorado Framework is based on and guided by these principles:

- Whole child and family centered
- Prenatal through age eight
- Strengths based
- Culturally relevant and responsive
- Outcomes focused
- Informed by evidence based and promising practices
- Cross-sector collaboration

Strategies for Action

- Connect and Empower Families
- Build Community Capacity
- Implement Quality Standards
- Make Data Informed Decisions
- Develop and Retain the Workforce
- Support Consumer Affordability
- Advance Sustainable Business Practices
- Encourage Public Private Approaches
- Pursue Continuous Quality Improvement
- Ensure Coordinated Services
- Promote and Share Knowledge

Fundamentals

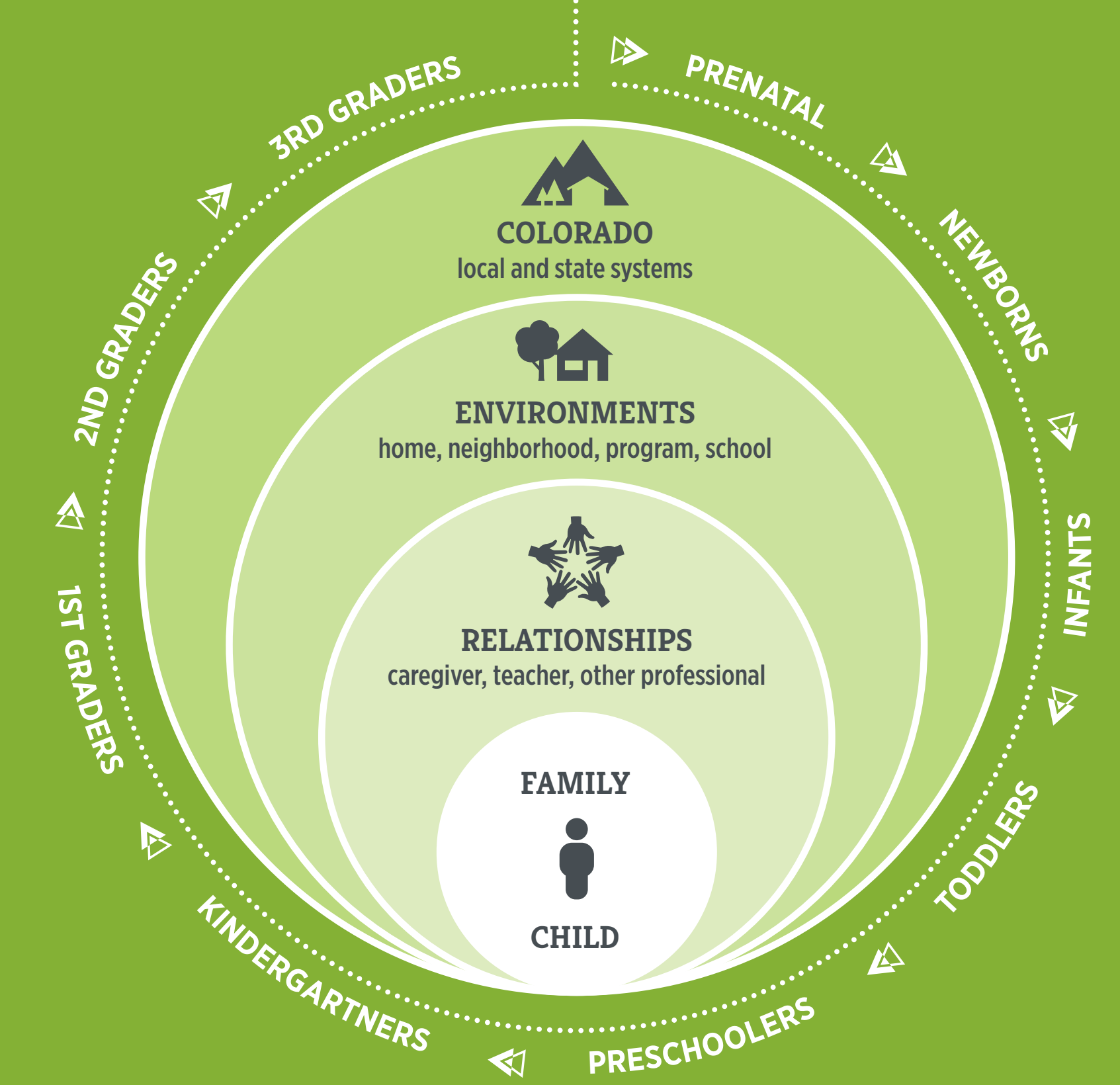
- Strong Partnerships
- Sufficient Investments
- Sound Policy
- Robust Public Engagement
- Shared Accountability
- Effective Leadership
- Relevant Education Opportunities

Outcomes ► access, quality and equity

- Family Support & Education
- Health & Well-Being
- Learning & Development

ACCESS	
	<ul style="list-style-type: none"> • Family engagement and leadership opportunities exist within programs, schools and communities • Services and supports promote the well-being and resiliency of parents and caregivers • Family friendly policies and practices exist in the workplace
	<ul style="list-style-type: none"> • Comprehensive health coverage and services are consistently utilized by pregnant women and children • Integrated and preventive maternal and child physical, behavioral and oral health services are available • All settings promote mental health and well-being through early identification, consultation and treatment
	<ul style="list-style-type: none"> • Education, coaching and ongoing training exist for caregivers, teachers and other professionals • Learning experiences and environments are high quality, developmentally appropriate and affordable
QUALITY	
	<ul style="list-style-type: none"> • Family knowledge and capacity support children's healthy development and learning • Families advocate for high quality comprehensive services and supports that lead to future success
	<ul style="list-style-type: none"> • All health care providers, including mental health, deliver coordinated, family focused care • Settings and practices promote strong relationships, social and emotional development, appropriate nutrition and physical activity
	<ul style="list-style-type: none"> • Formal and informal care environments and education practices reach the highest levels of quality • Adults understand and support children's learning and development, including social and emotional • All settings provide effective transitions across and within programs, schools and systems
EQUITY	
	<ul style="list-style-type: none"> • Education, employment, housing, financial and legal supports contribute to family economic security • Families, including those with high needs, experience timely and coordinated services and supports
	<ul style="list-style-type: none"> • Families have the ability to plan the number and timing of their children • All environments are safe, free of toxins, have affordable foods and offer physical activity • Children with special health, behavioral or developmental needs receive individualized services and supports
	<ul style="list-style-type: none"> • All children are ready for school and achieving by 3rd grade regardless of ability, race, place, income, language and culture • Children, including those with high needs, receive timely, comprehensive and affordable academic services and transition supports

all children are valued, healthy and thriving



Results

- CHILD**
Young children reach their developmental potential and are ready to succeed in school and in life
- ENVIRONMENTS**
Environments that impact children are safe, stable and supportive
- RELATIONSHIPS**
Adults are knowledgeable, responsive and interact effectively with and on behalf of children
- COLORADO**
Localities and the state attain economic and social benefits by prioritizing children and families