



FALL CLASS SCHEDULE

Updated 3/24/2025 @ 8:20am



2025

STUDENT ADMISSIONS CHECKLIST

Apply for Admissions and Scholarships

Apply for scholarships at the same time you apply for admission.

Application: trinidadstate.edu/apply

Scholarships: trinidadstate.edu/scholarships

Apply for Financial Aid

File a Free Application for Federal Student Aid: www.fafsa.ed.gov

TSC Code: 001368 – you will need previous income tax records

FSA ID: _____

Password: _____

For support, contact the Financial Aid staff at 719-846-5017

or the Educational Opportunity Center at 719-846-5689.

High School Transcripts

Submit proof of graduation or high school transcripts to the Admissions Office.

Have your high school send an official copy of your high school transcript at the time of application.

Send High School transcripts and documents to:

Admissions

Trinidad State College

600 Prospect Street

Trinidad, CO 81082

College Transcripts

Send college transcripts to Trinidad State. If you have enrolled in any college courses while attending high school, have each college send an official transcript to the Office of the Registrar prior to enrollment.

Send High School transcripts and documents to:

Registrar

Trinidad State College

600 Prospect Street

Trinidad, CO 81082

Immunization

Have your doctor send a copy of your immunization record to Trinidad State College.

Your record may be on your high school transcript.



**STUDENT'S
FIRST**
TRINIDAD STATE

TABLE OF CONTENTS

- How to read the Schedule, How do you go to Class?, and Academic Pathways 04
- Trinidad Campus Fall 2025 Class List 05
- Trinidad Campus Building Codes 11
- Valley Campus (Alamosa) Fall 2025 Class List 12
- COnline Fall 2025 Class List 20
- Statewide Guaranteed Transfer..... 24
- General Information..... 26
- Phone Numbers..... 30
- Course Specific Fees 31
- Scholarship Opportunities..... 36



IMPORTANT DATES FOR FALL 2025

March 10, 2025.....	Fall Registration / Advising / Placement Testing Begins
August 18, 2025	Session 1 Classes Begin
September 2, 2025	Session 2 Classes Begin
November 26-28, 2025	Fall Break
November 27, 2025	Thanksgiving Holiday
December 3, 2025	Last Day of Classes
December 4, 5, 8, 2025	Final Examinations
December 9, 2025	Assessment Day

How to Read the Schedule

Each course is identified in four parts: ,
CRN#, Subject, Course Number, and Section

Dates of class
and meeting times

Building and room class meets in. Always
check your TSCONnect Portal for current class locations

CRN# SUB Course Sect Course Title

Hrs. Start End Start End Bldg. Room Days Instructor Campus



Days of the week the class is held:
M = Monday, T = Tuesday, W = Wednesday,
R = Thursday, F = Friday, S = Saturday, U = Sunday
Example: TR means the class meets Tuesdays & Thursdays.

How do you go to class?



	In-Person, On-Campus	Hybrid On/Off Campus	Colorado Online
Description:	These classes require physical presence at set days, times, and location and are in-person, on-campus.	These classes require attendance at set days and times either in-person or virtual presence via WebEx/Zoom.	These classes are completely online (anytime).
Where do I go?	Classroom location noted on schedule.	Classroom location noted on schedule or virtual attendance.	100% Online (anytime).

ACADEMIC PATHWAYS

AGRICULTURE, NATURAL RESOURCES & ENERGY

Agriculture Business
Agriculture Education
Animal Science
Soil & Crop Sciences
Line Technician



... and so much more ...

BUSINESS & PUBLIC ADMINISTRATION

Accounting Clerk
Business Admin (BA)
Computer (CIS/CNG/CS)
Criminal Justice
Law Enforcement



... and so much more ...

EDUCATION

Teacher Preparation
Elementary Education
Special Education
Early Childhood
Supervisor (Infant/Toddler)



... and so much more ...

HEALTH SCIENCES

Nursing (AAS, BA)
Dental Assistant
Medical Assistant
Emergency Medical
Nurse Aide



... and so much more ...

SKILLED TRADES

Welding Technology
Automotive Service
Construction Technology
Gunsmithing
Cosmetology / Barbering



... and so much more ...

STEM & LIBERAL ARTS

Biology
Mathematics
Pre-Engineering
Psychology / Sociology
History / English
Art / Theatre



... and so much more ...

TRINIDAD CAMPUS FALL 2025 CLASS LIST

IN-PERSON, ON CAMPUS			COMBINATION ON/OFF CAMPUS			ONLINE									
CRN	SUB	Course	Section	Title	Hrs	Start	End	Start	End	Bld	Room	Days	Instructor	Campus	
ACCOUNTING															
23307	ACC	1021	H00	Accounting Principles I	4	18-Aug-25	8-Dec-25	0200PM	0315PM	TOFCMP	D2L	TR	Rigdon	TSC Virtual	
23951	ACC	1011	H10	Intro to Financial Accounting	3	18-Aug-25	8-Dec-25	800AM	920AM	Davis	215	MW	Shown	TSC Trinidad	
23952	ACC	1015	H10	Payroll Accounting	3	18-Aug-25	8-Dec-25	930AM	1050AM	Davis	215	TR	Shown	TSC Trinidad	
23953	ACC	1035	H10	Spreadsheet Applications - Accounting	3	18-Aug-25	8-Dec-25	930AM	1050AM	Davis	215	MW	Shown	TSC Trinidad	
23954	ACC	1022	H10	Accounting Principles II	4	18-Aug-25	8-Dec-25	1100AM	1220PM	Davis	215	TR	Shown	TSC Trinidad	
AGRICULTURE															
23245	AGE	1102	H00	Agriculture Economics: GT-SS1	3	18-Aug-25	8-Dec-25	D2L	D2L	TOFCMP	D2L	D2L	Wiley	TSC Virtual	
23246	AGE	2105	H00	Farm and Ranch Management	3	18-Aug-25	8-Dec-25	D2L	D2L	TOFCMP	D2L	D2L	Wiley	TSC Virtual	
23362	AGE	2108	H00	Agricultural Finance	3	18-Aug-25	8-Dec-25	D2L	D2L	TOFCMP	D2L	D2L	Wiley	TSC Virtual	
23262	AGY	1100	H00	General Crop Production	4	18-Aug-25	8-Dec-25	D2L	D2L	TOFCMP	D2L	D2L	Stillings	TSC Virtual	
23243	ASC	1100	H00	Animal Sciences	3	18-Aug-25	8-Dec-25	D2L	D2L	TOFCMP	D2L	D2L	Stillings	TSC Virtual	
23339	RAM	2005	H00	Range Management	3	18-Aug-25	8-Dec-25	D2L	D2L	TOFCMP	D2L	D2L	Stillings	TSC Virtual	
ART															
23386	ART	1110	PH7	Art Appreciation: AH1	3	18-Aug-25	8-Dec-25	0800AM	0915AM	TBERG	301	T	Reiling	TSC Trinidad	
23251	ART	1111	H10	Art Hist Ancient/ Mediev: AH1	3	18-Aug-25	8-Dec-25	0800AM	0915AM	TBERG	301	R	Reiling	TSC Trinidad	
23478	ART	1201	100	Drawing I	3	18-Aug-25	8-Dec-25	0100PM	0330PM	TBERG	301	MW	Reiling	TSC Trinidad	
23655	ART	1301	100	Painting I	3	18-Aug-25	8-Dec-25	1230PM	0300PM	TBERG	301	MW	Reiling	TSC Trinidad	
23440	ART	1110	H00	Art Appreciation: AH1	3	2-Sep-25	8-Dec-25	0900AM	0950AM	TOFCMP	D2L	F	Reiling	TSC Virtual	
24054	ART	1002	100	Visual Concepts 2D Design	s	18-Aug-25	8-Dec-25	0100pm	0330PM	TBERG	301	TR	Reiling	TSC Trinidad	
AUTOMOTIVE															
23828	ASE	1002	100	Intro to the Automotive Shop	2	18-Aug-25	29-Aug-25	0800AM	1200PM	TBV	101	MTWRF	Brunelli	TSC Trinidad	
23005	ASE	1020	100	Basic Auto Electricity	2	18-Aug-25	29-Aug-25	1230PM	0430PM	TBV	101	MTWRF	Brunelli	TSC Trinidad	
23984	ASE	1022	100	Automotive Electrical Safety Systems	1	2-Sep-25	8-Dec-25	0105PM	0205PM	TBV	101	MTW	Brunelli	TSC Trinidad	
23985	ASE	1023	100	Starting & Charging Systems	2	2-Sep-25	8-Dec-25	0210PM	0410PM	TBV	101	MTW	Brunelli	TSC Trinidad	
23986	ASE	1050	100	Man Drive Train & Axle	2	2-Sep-25	8-Dec-25	1040AM	1210PM	TBV	101	WR	Brunelli	TSC Trinidad	
23987	ASE	1051	100	Manual Trans/Transaxle & Clutch	2	2-Sep-25	8-Dec-25	0730AM	0845AM	TBV	101	MT	Brunelli	TSC Trinidad	
23988	ASE	1052	100	Manual Trans/Transaxle & Clutch II	2	2-Sep-25	8-Dec-25	0850AM	1105AM	TBV	101	MT	Brunelli	TSC Trinidad	
23989	ASE	2021	100	Auto/Diesel Body Electrical	4	2-Sep-25	8-Dec-25	0730AM	0900AM	TBV	101	WR	Brunelli	TSC Trinidad	
ASTRONOMY															
23338	AST	1110	100	Planetary Astronomy w/Lab: SC1	4	18-Aug-25	8-Dec-25	0300PM	0350PM	TDAVIS	234	MTWR	STAFF	TSC Trinidad	
BIOLOGY															
23503	BIO	1052	100	Wildlife Biology	3	18-Aug-25	8-Dec-25	0930AM	1030AM	TDAVIS	228	MTW	Wiening	TSC Trinidad	
23257	BIO	1111	100	GenBio I:Molec & Cell/Lab: SC1	5	18-Aug-25	8-Dec-25	0800AM	0915AM	TDAVIS	228	MWR	Wiening	TSC Trinidad	
23257	BIO	1111	100	GenBio I:Molec & Cell/Lab: SC1	5	18-Aug-25	8-Dec-25	0800AM	0915AM	TDAVIS	228	T	Wiening	TSC Trinidad	
23008	BIO	1111	102	GenBio I:Molec & Cell/Lab: SC1	5	18-Aug-25	8-Dec-25	0100PM	0215PM	TDAVIS	228	MTW	Wiening	TSC Trinidad	
23008	BIO	1111	102	GenBio I:Molec & Cell/Lab: SC1	5	18-Aug-25	8-Dec-25	0100PM	0215PM	TDAVIS	228	R	Wiening	TSC Trinidad	
23407	BIO	2101	100	Human Anatomy&Phys I w/Lab:SC1	4	18-Aug-25	8-Dec-25	1100AM	1230PM	TDAVIS	222	TR	Walker	TSC Trinidad	
23407	BIO	2101	100	Human Anatomy&Phys I w/Lab:SC1	4	18-Aug-25	8-Dec-25	0200PM	0500PM	TDAVIS	222	T	Walker	TSC Trinidad	
23408	BIO	2101	102	Human Anatomy&Phys I w/Lab:SC1	4	18-Aug-25	8-Dec-25	1100AM	1215PM	TDAVIS	222	TR	Walker	TSC Trinidad	
23408	BIO	2101	102	Human Anatomy&Phys I w/Lab:SC1	4	18-Aug-25	8-Dec-25	0200PM	0500PM	TDAVIS	222	R	Walker	TSC Trinidad	
23490	BIO	2102	100	Human Anatomy&Phys IIw/Lab:SC1	4	18-Aug-25	8-Dec-25	1100AM	1230PM	TDAVIS	222	MW	Walker	TSC Trinidad	
23490	BIO	2102	100	Human Anatomy&Phys IIw/Lab:SC1	4	18-Aug-25	8-Dec-25	0200PM	0500PM	TDAVIS	222	W	Walker	TSC Trinidad	
23563	BIO	1111	H00	GenBio I:Molec & Cell/Lab: SC1	5	18-Aug-25	8-Dec-25	D2L	D2L	TOFCMP	D2L	D2L	Cahoone	TSC Virtual	
23838	BIO	2101	H00	Human Anatomy&Phys I w/Lab:SC1	4	18-Aug-25	8-Dec-25	D2L	D2L	TOFCMP	D2L	D2L	Walker	TSC Virtual	
23613	BIO	2102	H00	Human Anatomy&Phys IIw/Lab:SC1	4	18-Aug-25	8-Dec-25	D2L	D2L	TOFCMP	D2L	D2L	Walker	TSC Virtual	
23608	BIO	2116	H00	Pathophysiology	4	18-Aug-25	8-Dec-25	0600PM	0750PM	TOFCMP	D2L	M	Moniot	TSC Virtual	

TRINIDAD CAMPUS FALL 2025 CLASS LIST (continued)

IN-PERSON, ON CAMPUS			COMBINATION ON/OFF CAMPUS		ONLINE											
CRN	SUB	Course	Section	Title	Hrs	Start	End	Start	End	Bld	Room	Days	Instructor	Campus		
BUSINESS																
23457	BUS	1015	H10	Introduction to Business	3	18-Aug-25	8-Dec-25	12:30	150PM	TLIB	310	MW	Velasquez	TSC Trinidad		
23498	BUS	1002	H10	Entrepreneurial Operations	3	18-Aug-25	8-Dec-25	0500PM	6:30PM	TLIB	310	W	Hammer	TSC Trinidad		
23556	BUS	1021	P70	Basic Workplace Skills	1	2-Sep-25	8-Dec-25	0745AM	0945AM	TBERG	304	F	Maxwell	TSC Trinidad		
23504	BUS	2017	H10	Business Communications	3	18-Aug-25	8-Dec-25	0800AM	0920AM	TLIB	310	TR	Velasquez	TSC Trinidad		
23769	BUS	2016	H00	Legal Environment of Business	3	18-Aug-25	8-Dec-25	D2L	D2L	TOFCMP	D2L	D2L	Duber-Smith	TSC Virtual		
23770	BUS	2026	H10	Business Statistics	3	18-Aug-25	8-Dec-25	0100PM	0230PM	TOFCMP	D2L	MW	Zverev	TSC Trinidad		
23955	BUS	3040	X00	Operations Management	3	18-Aug-25	8-Dec-25	D2L	D2L	TOFCMP	D2L	D2L	Hammer	TSC Virtual		
COMPUTER INFORMATION SYSTEMS																
23485	CIS	1018	H00	Intro PC Applications	3	18-Aug-25	8-Dec-25	D2L	D2L	TOFCMP	D2L	D2L	Rasmussen	TSC Virtual		
23957	CIS	2023	H10	Linux	3	18-Aug-25	8-Dec-25	1100AM	1220PM	TLIB	309	MW	STAFF	TSC Trinidad		
COMPUTER NETWORKING																
23960	CNG	1001	H10	Network Fundamentals	3	18-Aug-25	8-Dec-25	1:00PM	2:50PM	TDAVIS	234	M	Falk	TSC Trinidad		
23961	CNG	1020	H10	A+ Certification Prep	3	18-Aug-25	8-Dec-25	0100PM	0230PM	TDAVIS	115	MW	STAFF	TSC Trinidad		
23863	CNG	1024	H10	Networking I: Network +	3	18-Aug-25	8-Dec-25	0900AM	1050AM	TLIB	309	M	Falk	TSC Trinidad		
23864	CNG	1032	H10	Network Security Fundamentals	3	18-Aug-25	8-Dec-25	1100AM	1250AM	TLIB	309	T	Falk	TSC Trinidad		
23962	CNG	1033	H10	Firewalls/Network Security	3	18-Aug-25	8-Dec-25	1000AM	1050AM	TLIB	309	R	STAFF	TSC Trinidad		
23628	CNG	1036	H10	Guide to IT Disaster Recovery	3	18-Aug-25	8-Dec-25	9:00AM	10:50AM	TLIB	309	T	Falk	TSC Trinidad		
23963	CNG	1042	H10	Intro to Cloud Computing	3	18-Aug-25	8-Dec-25	11:00AM	12:50PM	TDAVIS	234	M	Falk	TSC Trinidad		
23964	CNG	2057	H10	Network Defense/Countermeasures	3	18-Aug-25	8-Dec-25	0800AM	0920AM	TDAVIS	234	MW	Williams	TSC Trinidad		
23965	CNG	2040	H10	Virtual Environment Admin	3	18-Aug-25	8-Dec-25	0930AM	1050AM	TDAVIS	234	MW	Williams	TSC Trinidad		
23966	CNG	2056	H10	Vulnerability Assessment 1	3	18-Aug-25	8-Dec-25	1100AM	1220PM	TDAVIS	234	MW	Williams	TSC Trinidad		
23976	CNG	2058	H10	Digital Forensics	3	18-Aug-25	8-Dec-25	0800AM	0920AM	TDAVIS	234	TR	Williams	TSC Trinidad		
23976	CNG	2058	H10	Digital Forensics	1	18-Aug-25	8-Dec-25	1100AM	1150AM	TDAVIS	234	T	Williams	TSC Trinidad		
23977	CNG	2059	H10	Enterprise Security	3	18-Aug-25	8-Dec-25	0930AM	1050AM	TDAVIS	234	TR	Williams	TSC Trinidad		
23977	CNG	2059	H10	Enterprise Security	1	18-Aug-25	8-Dec-25	1100AM	1150AM	TDAVIS	234	R	Williams	TSC Trinidad		
COMMUNICATION																
23258	COM	1150	100	Public Speaking	3	18-Aug-25	8-Dec-25	1230PM	0145PM	TBERG	309	TR	Nordgren	TSC Trinidad		
23010	COM	1150	101	Public Speaking	3	18-Aug-25	8-Dec-25	0900AM	0950AM	TBERG	309	MWF	Nordgren	TSC Trinidad		
23518	COM	1250	100	Interpersonal Comm: SS3	3	18-Aug-25	8-Dec-25	1100AM	1215PM	TLIB	310	TR	Heidelberg	TSC Trinidad		
23615	COM	1250	101	Interpersonal Comm: SS3	3	18-Aug-25	8-Dec-25	1100AM	1215PM	TBERG	310	MW	Heidelberg	TSC Trinidad		
23006	COM	1150	H00	Public Speaking	3	2-Sep-25	8-Dec-25	D2L	D2L	TOFCMP	D2L	D2L	Hamilton	TSC Virtual		
23759	COM	1250	H00	Interpersonal Comm: SS3	3	2-Sep-25	8-Dec-25	D2L	D2L	TOFCMP	D2L	D2L	Hamilton	TSC Virtual		
COSMETOLOGY																
23259	COS	1003	100	Intro Hair and Scalp	1	18-Aug-25	8-Dec-25	1235PM	0125PM	TMULL	301	MT	Samora	TSC Trinidad		
23259	COS	1003	100	Intro Hair and Scalp	1	18-Aug-25	8-Dec-25	1235PM	0125PM	TMULL	301	MT	James	TSC Trinidad		
23011	COS	1010	100	Intro Color	2	18-Aug-25	8-Dec-25	0130PM	0425PM	TMULL	301	M	Samora	TSC Trinidad		
23387	COS	1011	100	Inter I Color	2	18-Aug-25	8-Dec-25	0130PM	0425PM	TMULL	301	R	Samora	TSC Trinidad		
23012	COS	1020	100	Intro Cutting	2	18-Aug-25	8-Dec-25	0130PM	0425PM	TMULL	301	T	Samora	TSC Trinidad		
23013	COS	1030	100	Intro Styling	2	18-Aug-25	8-Dec-25	0130PM	0425PM	TMULL	301	W	James	TSC Trinidad		
23013	COS	1030	100	Intro Styling	2	18-Aug-25	8-Dec-25	0130PM	0425PM	TMULL	301	W	Samora	TSC Trinidad		
23014	COS	1040	100	Intro to Chemical Texture	1	18-Aug-25	8-Dec-25	1235PM	0125PM	TMULL	301	WR	Samora	TSC Trinidad		
23014	COS	1040	100	Intro to Chemical Texture	1	18-Aug-25	8-Dec-25	1235PM	0125PM	TMULL	301	WR	James	TSC Trinidad		
23260	COS	1050	H01	Laws, Rules, and Regulations	1	18-Aug-25	8-Dec-25	0800AM	0855AM	TMULL	301	W	James	TSC Trinidad		
23489	COS	2050	H01	Bus Mgmt/Per Skills/Ethics	1	18-Aug-25	8-Dec-25	0335PM	0445PM	TMULL	301	F	James	TSC Trinidad		
23760	COS	1060	H01	Intro to Infection Control	2	18-Aug-25	8-Dec-25	D2L	D2L	TOFCMP	D2L	D2L	James	TSC Virtual		
23467	COS	2062	100	Adv II Disinfect/Sanit/Safety	3	18-Aug-25	8-Dec-25	0800AM	1145AM	TMULL	301	T	Samora	TSC Trinidad		
23538	COS	1003	H20	Intro Hair and Scalp	1	18-Aug-25	8-Dec-25	1000AM	1055AM	TOFCMP	D2L	F	Presley	TSC Virtual		
CRIMINAL JUSTICE																
23820	CRJ	1010	H10	Intro to Criminal Justice: SS3	3	2-Sep-25	8-Dec-25	1230PM	145PM	TLIB	308	T	Sloane	TSC Trinidad		
23656	CRJ	1025	H10	Policing Systems	3	18-Aug-25	8-Dec-25	1200PM	1250PM	TLIB	309	W	Mochel	TSC Trinidad		
23821	CRJ	2030	H10	Criminology	3	2-Sep-25	8-Dec-25	0100PM	0215PM	TLIB	308	M	Sloane	TSC Trinidad		
23894	CRJ	1027	100	Crime Scene Investigation	3	18-Aug-25	8-Dec-25	800AM	0915AM	TLIB	308	TR	Lay	TSC Trinidad		

TRINIDAD CAMPUS FALL 2025 CLASS LIST (continued)

IN-PERSON, ON CAMPUS			COMBINATION ON/OFF CAMPUS			ONLINE									
CRN	SUB	Course	Section	Title	Hrs	Start	End	Start	End	Bld	Room	Days	Instructor	Campus	
DATA SCIENCE															
24029	DAT	1001	H10	Introduction to Data Science	3	18-Aug-25	8-Dec-25	1100AM	1220AM	TDAVIS	133	TR	Zverev	TSC Trinidad	
EARLY CHILDHOOD															
23227	ECE	1011	H00	Intro to Early Childhood Educ	3	18-Aug-25	8-Dec-25	0530PM	0650PM	TOFCMP	D2L	MW	Atencio	TSC Alamosa	
23512	ECE	1045	H00	Intro to ECE Techniques	3	18-Aug-25	8-Dec-25	0530PM	0650PM	TOFCMP	D2L	TR	Plane	TSC Alamosa	
24039	ECE	1111	H00	Infant/Toddler Theory/Practice	3	18-Aug-25	8-Dec-25	0700PM	0820PM	TOFCMP	D2L	MW	Atencio	TSC Alamosa	
23583	ECE	1125	H00	Infant/Toddler Lab Tech	3	18-Aug-25	8-Dec-25	0830PM	0915PM	TOFCMP	D2L	MW	Briones	TSC Alamosa	
23973	ECE	2631	H00	Language & Cognition	3	18-Aug-25	8-Dec-25	0500PM	0650PM	TOFCMP	D2L	F	Plane	TSC Alamosa	
23972	ECE	2621	H00	Curriculum Methods/Techniques	3	18-Aug-25	8-Dec-25	0700PM	0850PM	TOFCMP	D2L	F	Briones	TSC Alamosa	
ECONOMICS															
23482	ECO	2001	H10	Prin of Macroeconomics: SS1	3	2-Sep-25	8-Dec-25	1100AM	1220PM	TDAVIS	215	TR	Velasquez	TSC Trinidad	
EDUCATION															
23016	EDU	1088	100	Practicum I	1	18-Aug-25	8-Dec-25	D2L	D2L	TOFCMP	D2L	D2L	Trujillo	TSC Trinidad	
24075	EDU	2611	H00	Introduction to Education	3	18-Aug-25	8-Dec-25	0530PM	0800PM	TOFCMP	D2L	W	Trujillo	TSC Trinidad	
ELECTRICAL INDUSTRIAL/COMMERCIAL															
23224	EIC	1002	H00	Electrical Principles and Appl	3	11-Aug-25	21-Nov-25	0100PM	0300PM	TOFCMP		F	Maxwell	TSC Misc	
23224	EIC	1002	H00	Electrical Principles and Appl	3	11-Aug-25	21-Nov-25	0800AM	0925AM	TOFCMP		TR	Maxwell	TSC Misc	
23222	EIC	1102	H00	Safety & Industry Certificate	4	11-Aug-25	21-Nov-25	0930AM	1045AM	TLWT		MTWR	Lowe	TSC Misc	
23223	EIC	1210	H02	Power Theory & High Volt Appar	3	11-Aug-25	21-Nov-25	0800AM	0925AM	TLWT		MW	Lowe	TSC Misc	
23225	EIC	1230	H02	Underground Power Systems	7	11-Aug-25	21-Nov-25	1050AM	1115AM	TLWT		MTWR	Lowe	TSC Misc	
23225	EIC	1230	H02	Underground Power Systems	7	11-Aug-25	21-Nov-25	1230PM	0215PM	TLWT		MTWR	Lowe	TSC Misc	
23226	EIC	1231	102	Overhead Power Systems	9	11-Aug-25	21-Nov-25	1120AM	1200PM	TLWT		MTWR	Lowe	TSC Misc	
23226	EIC	1231	102	Overhead Power Systems	9	11-Aug-25	21-Nov-25	0220PM	0450PM	TLWT		MTWR	Lowe	TSC Misc	
EMERGENCY MEDICAL															
23448	EMS	1021	100	EMT Fundamentals	3	18-Aug-25	17-Sep-25	0600PM	1000PM	TDAVIS	123	MR	Bacharach	TSC Trinidad	
23448	EMS	1021	100	EMT Fundamentals	3	18-Aug-25	17-Sep-25	0800AM	0500PM	TDAVIS	123	S	Bacharach	TSC Trinidad	
23449	EMS	1022	100	EMT Medical Emergencies	4	18-Sep	29-Oct	0800AM	0500PM	TDAVIS	123	S	Bacharach	TSC Trinidad	
23449	EMS	1022	100	EMT Medical Emergencies	4	18-Sep	29-Oct	0600PM	1000PM	TDAVIS	123	MR	Bacharach	TSC Trinidad	
23450	EMS	1023	100	EMT Trauma Emergencies	2	30-Oct	14-Nov	0800AM	0500PM	TDAVIS	123	S	Bacharach	TSC Trinidad	
23450	EMS	1023	100	EMT Trauma Emergencies	2	30-Oct	14-Nov	0600PM	1000PM	TDAVIS	123	MR	Bacharach	TSC Trinidad	
23451	EMS	1024	100	EMT Special Considerations	2	15-Nov	11-Dec	0600PM	1000PM	TDAVIS	123	MR	Bacharach	TSC Trinidad	
23451	EMS	1024	100	EMT Special Considerations	2	15-Nov	11-Dec	0800AM	0500PM	TDAVIS	123	S	Bacharach	TSC Trinidad	
23452	EMS	1070	100	EMT Clinical	1	18-Sep	11-Dec	D2L	D2L	TOFCMP	D2L	D2L	Bacharach	TSC Trinidad	
ENGLISH															
23382	ENG	1021	102	English Composition I:CO1	3	18-Aug-25	8-Dec-25	1100AM	1215PM	TBERG	309	MW	Nordgren	TSC Trinidad	
23889	ENG	1021	100	English Composition I:CO1	3	18-Aug-25	8-Dec-25	0930AM	1045AM	TLIB	310	TR	Heidelberg	TSC Trinidad	
23377	ENG	1021	H00	English Composition I:CO1	3	18-Aug-25	8-Dec-25	D2L	D2L	TOFCMP	D2L	D2L	Geraci	TSC Virtual	
23429	ENG	1022	H00	English Composition II:CO2	3	18-Aug-25	8-Dec-25	D2L	D2L	TOFCMP	D2L	D2L	Geraci	TSC Virtual	
24052	ENG	1022	100	English Composition II:CO1	3	18-Aug-25	8-Dec-25	0930AM	1045AM	TBERG	309	TR	Nordgren	TSC Trinidad	
24053	ENG	1021	101	English Composition I:CO1	3	2-Sep-25	8-Dec-25	0930AM	1045AM	TBERG	310	TR	Wilson	TSC Trinidad	
ENVIRONMENTAL SCIENCE															
23484	ENV	1010	H00	Natural Disasters: SC2	3	2-Sep-25	8-Dec-25	D2L	D2L	TOFCMP	D2L	D2L	Cahoone	TSC Virtual	
23483	ENV	1111	H00	Environmental Sci w/Lab: SC1	4	2-Sep-25	8-Dec-25	D2L	D2L	TOFCMP	D2L	D2L	Cahoone	TSC Virtual	
ESTHETICIAN															
23388	EST	1010	100	Intro Skin Care	3	18-Aug-25	8-Dec-25	0800AM	1145AM	TMULL	301	M	Samora	TSC Trinidad	

TRINIDAD CAMPUS FALL 2025 CLASS LIST (continued)

IN-PERSON, ON CAMPUS			COMBINATION ON/OFF CAMPUS		ONLINE										
CRN	SUB	Course	Section	Title	Hrs	Start	End	Start	End	Bld	Room	Days	Instructor	Campus	
Gunsmithing - NRA Certified Training Center: To register, please contact Bryce Seamans at 719-846-5631															
23872	GUR	1001	100	NRA Home Firearm Safety Course	0.5	18-Aug-25	18-Aug-25	0800AM	0500PM	TMULL	306	F	Newport	TSC Trinidad	
23850	GUR	1010	100	NRA Basic Muzzleloader	1	5-Sep-25	6-Sep-25	0600PM	0900PM	TMULL	412	F	Gifford	TSC Trinidad	
23850	GUR	1010	100	NRA Basic Muzzleloader	1	5-Sep-25	6-Sep-25	0900AM	0400PM	TMULL	412	S	Gifford	TSC Trinidad	
23574	GUR	1020	100	NRA Range Safety Officer	0.5	3-Oct-25	3-Oct-25	0530PM	0900PM	TMULL	412	F	Gifford	TSC Trinidad	
23574	GUR	1020	100	NRA Range Safety Officer	0.5	4-Oct-25	4-Oct-25	0900AM	0200PM	TMULL	412	S	Gifford	TSC Trinidad	
23575	GUR	2001	100	Firearm Safety Instructor	0.5	17-Oct-25	17-Oct-25	0130PM	0700PM	TMULL	412	F	Newport	TSC Trinidad	
23851	GUR	2010	100	Muzzleloader Instructor	1	24-Oct-25	24-Oct-25	0130PM	0700PM	TMULL	412	F	Newport	TSC Trinidad	
23851	GUR	2010	100	Muzzleloader Instructor	1	25-Oct-25	25-Oct-25	0900PM	0300PM	TMULL	412	S	Newport	TSC Trinidad	
23852	GUR	2020	100	NRA Chief Range Safety Officer	0.5	14-Nov-25	14-Nov-25	0300PM	0800PM	TMULL	412	F	Newport	TSC Trinidad	
23852	GUR	2020	100	NRA Chief Range Safety Officer	0.5	15-Nov-25	15-Nov-25	0900AM	0200PM	TMULL	412	S	Newport	TSC Trinidad	

GUNSMITHING

To register, contact Bryce Seamans at 719-846-5631

23220	GUS	1000	100	Orientation & Firearms Safety	0.5	15-Aug-25	15-Aug-25	0800AM	0500PM	TMULL	306	F	Newport	TSC Trinidad
23021	GUS	1002	100	Introduction to Firearms	2	18-Aug-25	8-Dec-25	0105PM	0210PM	TMULL	213	MW	Schmit	TSC Trinidad
23228	GUS	1010	100	Firearms Bench Metal	5	18-Aug-25	3-Dec-25	0130PM	0430PM	TMULL	106	TR	Newport	TSC Trinidad
23398	GUS	1012	100	Firearms Machine Shop I	5	18-Aug-25	8-Dec-25	0830AM	1150AM	TMULL	211	TR	Schmit	TSC Trinidad
23399	GUS	1019	100	Stockmaking I	5	18-Aug-25	8-Dec-25	0830AM	1145AM	TMULL	101	MWF	Campbell	TSC Trinidad
23400	GUS	1027	100	Firearms Machine Shop II	4	18-Aug-25	8-Dec-25	0830AM	1115AM	TMULL	211	MW	Schmit	TSC Trinidad
23022	GUS	1035	100	Firearms Conversions	5	18-Aug-25	8-Dec-25	0100PM	0315PM	TMULL	101	TRF	Campbell	TSC Trinidad
23309	GUS	1036	100	Firearms Metal Finishing	2	18-Aug-25	8-Dec-25	0130PM	0430PM	TMULL	106	W	Campbell	TSC Trinidad
23296	GUS	1039	100	Stock Duplication	2	18-Aug-25	8-Dec-25	0100PM	0430PM	TMULL	101	MR	Campbell	TSC Trinidad
23023	GUS	1047	100	Firearms Repair I	5	18-Aug-25	3-Dec-25	0830AM	1145AM	TMULL	306	TR	Newport	TSC Trinidad
23599	GUS	2002	100	CNC I	2	18-Aug-25	8-Dec-25	0220PM	0505PM	TMULL	213	W	Schmit	TSC Trinidad
23297	GUS	2005	100	Firearms Machine Shop III	4	18-Aug-25	8-Dec-25	0115PM	0400PM	TMULL	211	TR	Schmit	TSC Trinidad
23434	GUS	2008	100	Alternative Metal Finishes	2	18-Aug-25	8-Dec-25	0600PM	0830PM	TMULL	106	M	Campbell	TSC Trinidad
23219	GUS	2045	100	Stockmaking II	5	18-Aug-25	8-Dec-25	0830AM	1145AM	TMULL	101	TR	Campbell	TSC Trinidad
23389	GUS	2047	100	Firearms Repair II	7	18-Aug-25	3-Dec-25	0830AM	1140AM	TMULL	306	MWF	Newport	TSC Trinidad
23229	GUS	2065	100	Comprehensive Skills Evals	0.5	5-Dec-25	8-Dec-25	0800AM	0500PM	TMULL	306	M	Newport	TSC Trinidad
23983	GUS	2040	100	Shotgunsmithing	2	18-Aug-25	3-Dec-25	0100PM	0445PM	TMULL	306	M	Newport	TSC Trinidad

HISTORY

23506	HIS	1110	PH7	The World: Antiquity-1500: HI1	3	18-Aug-25	8-Dec-25	0900AM	0950AM	TBERG	304	MW	Boone	TSC Trinidad
23261	HIS	1210	PH7	US History to Reconst: HI1	3	2-Sep-25	8-Dec-25	0800AM	0915AM	TBERG	304	TR	Boone	TSC Trinidad
23663	HIS	2105	P70	Women in U.S. History: HI1	3	18-Aug-25	8-Dec-25	0800AM	0915AM	TBERG	304	TR	Boone	TSC Trinidad
23441	HIS	1210	H00	US History to Reconst: HI1	3	18-Aug-25	8-Dec-25	0200PM	0250PM	TOFCMP	D2L	F	Eades	TSC Virtual
24048	HIS	2015	P70	20th Century World History: HI1	3	2-Sep-25	8-Dec-25	1000AM	1050AM	TBERG	304	MW	Boone	TSC Trinidad
24049	HIS	2135	P70	Colorado History: HI1	3	2-Sep-25	8-Dec-25	0100PM	0150PM	TBERG	304	MW	Boone	TSC Trinidad

HUMAN PERFORMANCE

23597	HPE	1000	100	Intro to Physical Ed & Sport	2	18-Aug-25	8-Dec-25	1000AM	1050AM	TBOYD	TCRM	MW	Folda	TSC Trinidad
23390	HPE	2031	H10	Care/Prevent Athletic Injuries	3	18-Aug-25	8-Dec-25	0930AM	1045AM	TBOYD	TCRM	TR	Mariscal	TSC Trinidad
23522	HPE	2000	H00	Perspectives in PE & Sport	3	18-Aug-25	8-Dec-25	D2L	D2L	TOFCMP	D2L	D2L	Sloane	TSC Virtual

HEALTH PROFESSIONAL

23585	HPR	1039	PH5	Medical Terminology	2	18-Aug-25	8-Dec-25	0300PM	0430PM	TDAVIS	103	R	O'Brien	TSC Trinidad
23507	HPR	1039	H00	Medical Terminology	2	2-Sep-25	8-Dec-25	1100AM	1150AM	TOFCMP	D2L	TR	Medina	TSC Virtual

HEALTH & WELLNESS

23508	HWE	1050	H00	Human Nutrition	3	2-Sep-25	8-Dec-25	D2L	D2L	TOFCMP	D2L	D2L	Chiaromonte	TSC Virtual
-------	-----	------	-----	-----------------	---	----------	----------	-----	-----	--------	-----	-----	-------------	-------------

HUMANITIES

22571	HUM	1015	100	World Mythology: AH2	3	19-Aug-24	9-Dec-24	1000AM	1050AM	TDAVIS	105	MWF	Smith	TSC Trinidad
22959	HUM	1015	H00	World Mythology: AH2	3	3-Sep-24	9-Dec-24	D2L	D2L	D2L	D2L	D2L	Hank	TSC Virtual
22751	HUM	1022	H00	Humanities: Mediev-Mod: AH2	3	19-Aug-24	9-Dec-24	D2L	D2L	TOFCMP	D2L	D2L	Hank	TSC Virtual
22488	HUM	1021	H00	Humanities: Early Civ: AH2	3	3-Sep-24	9-Dec-24	D2L	D2L	TOFCMP	D2L	D2L	Hank	TSC Virtual
22523	HUM	1023	100	Humanities: Modern Wrld: AH2	3	19-Aug-24	9-Dec-24	0900AM	0950AM	TDAVIS	105	MWF	Smith	TSC Trinidad

MACHINING

23310	MAC	1078	151	Machining Workshop	2	18-Aug-25	8-Dec-25	0550PM	0855PM	TMULL	211	T	Schmit	TSC Trinidad
23311	MAC	2078	151	Machining Workshop	2	18-Aug-25	8-Dec-25	0550PM	0920PM	TMULL	211	R	Schmit	TSC Trinidad

TRINIDAD CAMPUS FALL 2025 CLASS LIST (continued)

IN-PERSON, ON CAMPUS			COMBINATION ON/OFF CAMPUS		ONLINE									
CRN	SUB	Course	Section	Title	Hrs	Start	End	Start	End	Bld	Room	Days	Instructor	Campus
MANAGEMENT														
23775	MAN	1002	H00	Ethics & Values	1	18-Aug-25	8-Dec-25	D2L	D2L	TOFCMP	D2L	D2L	Hammer	TSC Virtual
23777	MAN	1017	H00	Time Management	1	18-Aug-25	8-Dec-25	0930AM	1050AM	TOFCMP	D2L	W	Hammer	TSC Virtual
23778	MAN	2026	H00	Principles of Management	3	2-Sep-25	8-Dec-25	D2L	D2L	TOFCMP	D2L	D2L	Hammer	TSC Virtual
23967	MAN	3050	X00	Innovation and Change Mgmt	3	18-Aug-25	8-Dec-25	D2L	D2L	TOFCMP	D2L	D2L	Velasquez	Online
MARKETING														
23958	MAR	1060	H00	Customer Service	3	18-Aug-25	8-Dec-25	D2L	D2L	TOFCMP	D2L	D2L	Duber-Smith	TSC Virtual
23960	MAR	2016	H00	Principles of Marketing	3	18-Aug-25	8-Dec-25	D2L	D2L	TOFCMP	D2L	D2L	Duber-Smith	TSC Virtual
MATHEMATICS														
23519	MAT	1140	100	Career Math:	3	18-Aug-25	8-Dec-25	0900AM	0950AM	TDAVIS	133	MTW	Watson	TSC Trinidad
23600	MAT	1240	100	Math for Liberal Arts: MA1	4	18-Aug-25	8-Dec-25	1230PM	0150PM	TDAVIS		MTR	Maclaren	TSC Trinidad
23867	MAT	1260	H10	Intro to Statistics: MA1	3	18-Aug-25	8-Dec-25	0100PM	0230PM	TOFCMP	D2L	TR	Zverev	TSC Trinidad
23018	MAT	1340	100	College Algebra: MA1	4	18-Aug-25	8-Dec-25	0800AM	0850AM	TDAVIS	133	MTWR	Watson	TSC Trinidad
23017	MAT	1340	102	College Algebra: MA1	4	18-Aug-25	8-Dec-25	1000AM	1050AM	TDAVIS	133	MTWR	Watson	TSC Trinidad
23537	MAT	1340	103	College Algebra: MA1	4	18-Aug-25	8-Dec-25	0100PM	0150PM	TDAVIS	133	MTWR	Watson	TSC Trinidad
23595	MAT	1240	H00	Math for Liberal Arts: MA1	4	18-Aug-25	8-Dec-25	D2L	D2L	TOFMCP	D2L	D2L	Zverev	TSC Virtual
23514	MAT	1260	H00	Intro to Statistics: MA1	3	18-Aug-25	8-Dec-25	D2L	D2L	TOFMCP	D2L	D2L	Emerick	TSC Virtual
23491	MAT	1340	H00	College Algebra: MA1	4	18-Aug-25	8-Dec-25	D2L	D2L	TOFMCP	D2L	D2L	Maclaren	TSC Virtual
MEDICAL ASSISTING PROFESSIONAL														
23393	MAP	1010	PH5	Medical Office Administration	4	18-Aug-25	8-Dec-25	0330PM	0730PM	TDAVIS	103	T	O'Brien	TSC Trinidad
23394	MAP	1020	PH5	Medical Office Financial Mgmt	4	18-Aug-25	8-Dec-25	1255PM	0330PM	TDAVIS	103	W	O'Brien	TSC Trinidad
23372	MAP	1083	PH5	Medical Assistant Internship	4	18-Aug-25	8-Dec-25	1100AM	1155AM	TDAVIS	103	R	O'Brien	TSC Trinidad
23372	MAP	1083	PH5	Medical Assistant Internship	4	18-Aug-25	8-Dec-25	1100AM	1155AM	TDAVIS	103	R	O'Brien	TSC Trinidad
23426	MAP	2040	PH5	Medical Assist Clinical Skills	4	18-Aug-25	8-Dec-25	0230PM	0630PM	TDAVIS	215	M	O'Brien	TSC Trinidad
23373	MAP	2069	PH5	Review- Medical Asst Natl Exam	1	18-Aug-25	8-Dec-25	0100PM	0200PM	TDAVIS	103	M	O'Brien	TSC Trinidad
23373	MAP	2069	PH5	Review- Medical Asst Natl Exam	1	18-Aug-25	8-Dec-25	0100PM	0200PM	TDAVIS	103	M	O'Brien	TSC Trinidad
MUSIC														
23298	MUS	1020	100	Music Appreciation: AH1	3	18-Aug-25	8-Dec-25	0930AM	1045AM	TMC	THEA	TR	Olsen	TSC Trinidad
NAIL TECHNICIAN														
23417	NAT	1010	100	Intro to Nail Care	3	18-Aug-25	8-Dec-25	0900AM	1145AM	TMULL	301	WR	Samora	TSC Trinidad
23418	NAT	1011	100	Inter I Nail Care	2	18-Aug-25	8-Dec-25	0845AM	1145AM	TMULL	301	F	Samora	TSC Trinidad
23419	NAT	2010	100	Advanced Nail Care	2	18-Aug-25	8-Dec-25	1230PM	0330PM	TMULL	301	F	Samora	TSC Trinidad
NURSING														
23335	NUR	1001	100	Pharmacology Calculations	1	18-Aug-25	8-Dec-25	1100AM	1200PM	TDAVIS	115	M	DiNero	TSC Trinidad
23375	NUR	1009	100	Fundamentals of Nursing	6	18-Aug-25	8-Dec-25					WRF	Vigil	TSC Trinidad
23375	NUR	1009	100	Fundamentals of Nursing	6	18-Aug-25	8-Dec-25	0900AM	1200PM	TDAVIS	123	T	Vigil	TSC Trinidad
23249	NUR	1009	150	Fundamentals of Nursing	6	18-Aug-25	8-Dec-25	0400PM	0800PM	TDAVIS	146	M	DiNero	TSC Trinidad
23249	NUR	1009	150	Fundamentals of Nursing	6	18-Aug-25	8-Dec-25					US	DiNero	TSC Trinidad
23218	NUR	1012	100	Basic Concepts of Pharmacology	2	18-Aug-25	8-Dec-25	0100PM	0300PM	TDAVIS	105	T	Vigil	TSC Trinidad
23234	NUR	1012	150	Basic Concepts of Pharmacology	2	18-Aug-25	8-Dec-25	0400PM	0800PM	TDAVIS	146	T	Medina	TSC Trinidad
23216	NUR	2006	100	Adv Concepts of Med/Surg NSG I	6.5	18-Aug-25	8-Dec-25					MRF	Vigil/Salapich	TSC Trinidad
23216	NUR	2006	100	Adv Concepts of Med/Surg NSG I	6.5	18-Aug-25	8-Dec-25	1200PM	0300PM	TDAVIS	115	T	Vigil/Salapich	TSC Trinidad
23235	NUR	2006	150	Adv Concepts of Med/Surg NSG I	6.5	18-Aug-25	8-Dec-25	0400PM	0800PM	TDAVIS	133	R	STAFF	TSC Trinidad
23235	NUR	2006	150	Adv Concepts of Med/Surg NSG I	6.5	18-Aug-25	8-Dec-25					US	STAFF	TSC Trinidad
23217	NUR	2012	100	Pharmacology II	2	18-Aug-25	8-Dec-25	1200PM	0200PM	TDAVIS	115	W	Vigil/Salapich	TSC Trinidad
23250	NUR	2012	150	Pharmacology II	2	18-Aug-25	8-Dec-25	0400PM	0800PM	TDAVIS	115	W	Vigil/Salapich	TSC Trinidad
23890	NUR	3001	H00	Integration into BSN Practice	3	27-Oct-25	7-Dec-25	D2L	D2L	TOFCMP	D2L	D2L	Cook	TSC Virtual
23446	NUR	3002	H00	Trends in Nursing Practice	3	4-Aug-25	14-Sep-25	D2L	D2L	TOFCMP	D2L	D2L	Cook	TSC Virtual
23604	NUR	3003	H00	Nursing Research/EBP	3	15-Sep-25	26-Oct-25	D2L	D2L	TOFCMP	D2L	D2L	Talbott	TSC Virtual
23458	NUR	3005	H00	Emergency Preparedness	3	27-Oct-25	7-Dec-25	D2L	D2L	TOFCMP	D2L	D2L	Medina	TSC Virtual
23505	NUR	3007	H00	Behavioral Health	3	4-Aug-25	14-Sep-25	D2L	D2L	TOFCMP	D2L	D2L	Hendricks	TSC Virtual
23829	NUR	4010	H01	Community Health Nursing/Prac	6	18-Aug-25	9-Nov-25	D2L	D2L	TOFCMP	D2L	D2L	Gilbert	TSC Virtual
23493	NUR	4011	H00	Senior Seminar	3	10-Nov-25	20-Dec-25	D2L	D2L	TOFCMP	D2L	D2L	Garcia	TSC Virtual

TRINIDAD CAMPUS FALL 2025 CLASS LIST (continued)

IN-PERSON, ON CAMPUS			COMBINATION ON/OFF CAMPUS		ONLINE											
CRN	SUB	Course	Section	Title	Hrs	Start	End	Start	End	Bld	Room	Days	Instructor	Campus		
PHYSICAL EDUCATION																
23236	PED	1001	100	Cond. Lab: Men's Basketball	1	18-Aug-25	8-Dec-25	0630PM	0730PM	TGYM		MW	Folda	TSC Trinidad		
23532	PED	1001	102	Cond. Lab: Women's Basketball	1	18-Aug-25	8-Dec-25	0400PM	0600PM	TGYM		TR	Hugins	TSC Trinidad		
23562	PED	1001	104	Cond. Lab: Men's Soccer	1	18-Aug-25	8-Dec-25	0700PM	0900PM	TGYM		TR	Freeman	TSC Trinidad		
23535	PED	1001	105	Cond. Lab: Women's Soccer	1	18-Aug-25	8-Dec-25	0200PM	0400PM	TGYM		TR	Freeman	TSC Trinidad		
23533	PED	1001	106	Cond. Lab: Women's Softball	1	18-Aug-25	8-Dec-25	0300PM	0400PM	TGYM		MTWR	Swazo	TSC Trinidad		
23536	PED	1001	107	Cond. Lab: Baseball	1	18-Aug-25	8-Dec-25	0600PM	0730PM	TGYM		MT	Veyna	TSC Trinidad		
23534	PED	1001	108	Cond. Lab: Volleyball	1	18-Aug-25	8-Dec-25	0200PM	0300PM	TGYM		MTWR	STAFF	TSC Trinidad		
23560	PED	1001	109	Cond. Lab Wrestling	1	18-Aug-25	8-Dec-25	0600AM	0800AM	TGYM		MWF	STAFF	TSC Trinidad		
23654	PED	1001	110	Conditioning Lab	1	18-Aug-25	8-Dec-25	0600AM	0800AM	TGYM		MWF	STAFF	TSC Trinidad		
23598	PED	1002	100	Weight Training I	1	18-Aug-25	8-Dec-25	1000AM	1050AM			F	Folda	TSC Trinidad		
23237	PED	2037	100	VS: Men's Basketball	1	18-Aug-25	8-Dec-25	0215PM	0315PM	TGYM		MTWR	Folda	TSC Trinidad		
23238	PED	2037	102	VS: Women's Basketball	1	18-Aug-25	8-Dec-25	0400PM	0600PM	TGYM		MWF	Hugins	TSC Trinidad		
23239	PED	2037	104	VS: Men's Soccer	1	18-Aug-25	8-Dec-25	0700PM	0900PM	TGYM		MWF	Freeman	TSC Trinidad		
23240	PED	2037	105	VS: Women's Soccer	1	18-Aug-25	8-Dec-25	0200PM	0400PM	TGYM		MWF	Freeman	TSC Trinidad		
23241	PED	2037	106	VS: Women's Softball	1	18-Aug-25	8-Dec-25	0200PM	0300PM			MTWR	Swazo	TSC Trinidad		
23242	PED	2037	107	VS: Baseball	1	18-Aug-25	8-Dec-25	0230PM	0330PM			MTWR	Veyna	TSC Trinidad		
23248	PED	2037	108	VS: Volleyball	1	18-Aug-25	8-Dec-25	0300PM	0400PM	TGYM		MTWR	STAFF	TSC Trinidad		
23561	PED	2037	109	Varsity Sports: Wrestling	1	18-Aug-25	8-Dec-25	0300PM	0500PM	TGYM		MTWRF	STAFF	TSC Trinidad		
23605	PED	2037	110	VS: Women's Wrestling	1	18-Aug-25	8-Dec-25	0200PM	0355PM	TGYM		MWF	STAFF	TSC Trinidad		
23978	PED	2010	100	Archery	1	2-Sep-25	8-Dec-25	1230PM	0145PM	TBERG	310	R	Haddow	TSC Trinidad		
POLITICAL SCIENCE																
23559	PSC	1011	H00	American Government: SS1	3	18-Aug-25	8-Dec-25	D2L	D2L	TOFCMP	D2L	D2L	Lanier	TSC Virtual		
PSYCHOLOGY																
23488	PSY	1001	100	General Psychology I: SS3	3	18-Aug-25	8-Dec-25	0800AM	0915AM	TLIB	308	TR	Herbstritt	TSC Trinidad		
23651	PSY	1001	H10	General Psychology I: SS3	3	18-Aug-25	8-Dec-25	1100AM	1150AM	TLIB	308	MW	Herbstritt	TSC Trinidad		
23653	PSY	1001	H11	General Psychology I: SS3	3	2-Sep-25	8-Dec-25	0100PM	0150PM	TLIB	309	MW	Laurel	TSC Trinidad		
23437	PSY	2440	100	Human Growth & Developmnt: SS3	3	18-Aug-25	8-Dec-25	0930AM	1045AM	TLIB	308	TR	Herbstritt	TSC Trinidad		
23836	PSY	1001	H00	General Psychology I: SS3	3	18-Aug-25	8-Dec-25	D2L	D2L	TOFCMP	D2L	D2L	Tabeling-Garcia	TSC Virtual		
23868	PSY	1001	H01	General Psychology I: SS3	3	2-Sep-25	8-Dec-25	D2L	D2L	TOFCMP	D2L	D2L	Brydges	TSC Virtual		
23616	PSY	1002	H00	General Psychology II : SS3	3	2-Sep-25	8-Dec-25	D2L	D2L	TOFCMP	D2L	D2L	Tabeling-Garcia	TSC Virtual		
23652	PSY	2221	H00	Social Psychology: SS3	3	18-Aug-25	8-Dec-25	1000AM	1050AM	TOFCMP	D2L	MW	Laurel	TSC Virtual		
23523	PSY	2440	H00	Human Growth & Developmnt: SS3	3	18-Aug-25	8-Dec-25	D2L	D2L	TOFCMP	D2L	D2L	Naranjo	TSC Virtual		
23765	PSY	2440	H01	Human Growth & Developmnt: SS3	3	2-Sep-25	8-Dec-25	D2L	D2L	TOFCMP	D2L	D2L	Naranjo	TSC Virtual		
23837	PSY	2441	H00	Child Development: SS3	3	18-Aug-25	8-Dec-25	D2L	D2L	TOFCMP	D2L	D2L	Naranjo	TSC Virtual		
23486	PSY	2552	H00	Psychopathology: SS3	3	18-Aug-25	8-Dec-25	D2L	D2L	TOFCMP	D2L	D2L	Tabeling-Garcia	TSC Virtual		
23981	PSY	2770	H00	Intro to Forensic Psychology	3	18-Aug-25	8-Dec-25	1100AM	1150AM	TOFCMP	D2L	MW	Brydges	TSC Virtual		
23982	PSY	1002	H10	General Psychology II : SS3	3	18-Aug-25	8-Dec-25	0200PM	0250PM	LIB	ANY RM	MW	Laurel	TSC Trinidad		
RECREATION																
23299	REC	1020	100	Intro to Sport Management	3	18-Aug-25	8-Dec-25	1100AM	1150AM	TBOYD	TCRM	MW	Folda	TSC Trinidad		
23546	REC	2021	H10	Recreational Skills	3	2-Sep-25	8-Dec-25	1200PM	1250PM	TLIB	308	W	Sloane	TSC Trinidad		
SCIENCE																
23492	SCI	1105	H00	Science in Society: SC2	3	2-Sep-25	8-Dec-25	D2L	D2L	TOFCMP	D2L	D2L	Cahoone	TSC Virtual		
SOCIOLOGY																
23510	SOC	1001	100	Intro to Sociology I : SS3	3	18-Aug-25	8-Dec-25	1100AM	1215PM	TLIB	308	TR	Herbstritt	TSC Trinidad		
23658	SOC	1001	H00	Intro to Sociology I : SS3	3	2-Sep-25	8-Dec-25	D2L	D2L	TOFCMP	D2L	D2L	Tabeling-Garcia	TSC Virtual		
23657	SOC	1002	H00	Intro to Sociology II: SS3	3	2-Sep-25	8-Dec-25	D2L	D2L	TOFCMP	D2L	D2L	Tabeling-Garcia	TSC Virtual		
THEATRE																
23019	THE	1005	100	Theatre Appreciation: AH1	3	18-Aug-25	8-Dec-25	0100PM	0150PM	TBERG	105	MWF	Reorda	TSC Trinidad		
23020	THE	1005	101	Theatre Appreciation: AH1	3	18-Aug-25	8-Dec-25	1230PM	0145PM	TBERG	105	TR	STAFF	TSC Trinidad		
23611	THE	2011	H10	Dev of Theatre Grk-Renn: AH1	3	18-Aug-25	8-Dec-25	1100AM	1150AM	TBERG	105	MW	Reorda	TSC Trinidad		
24055	THE	2015	100	Playwriting: AH1	3	18-Aug-25	8-Dec-25	1245AM	0155PM	TBERG	309	MW	Nordgren	TSC Trinidad		

VALLEY CAMPUS FALL 2025 CLASS LIST

IN-PERSON, ON CAMPUS			COMBINATION ON/OFF CAMPUS			ONLINE									
CRN	SUB	Course	Section	Title	Hrs	Start	End	Start	End	Bld	Room	Days	Instructor	Campus	
ACCOUNTING															
23307	ACC	1021	H00	Accounting Principles I	4	18-Aug-25	8-Dec-25	0200PM	0315PM	TOFCMP	D2L	TR	Rasmussen	TSC Virtual	
23968	ACC	1011	H20	Intro to Financial Accounting	3	18-Aug-25	8-Dec-25	800AM	920AM	Valley	210	MW	Shown	TSC Alamosa	
23969	ACC	1015	H20	Payroll Accounting	3	18-Aug-25	8-Dec-25	930AM	1050AM	Valley	210	TR	Shown	TSC Alamosa	
23970	ACC	1035	H20	Spreadsheet Applications - Accounting	3	18-Aug-25	8-Dec-25	930AM	1050AM	Valley	210	MW	Shown	TSC Alamosa	
23971	ACC	1022	H20	Accounting Principles II	4	18-Aug-25	8-Dec-25	1100AM	1220PM	Valley	210	TR	Shown	TSC Alamosa	
AGRICULTURE															
23245	AGE	1102	H00	Agriculture Economics: GT-SS1	3	18-Aug-25	8-Dec-25	D2L	D2L	TOFCMP	D2L	D2L	Wiley	TSC Virtual	
23246	AGE	2105	H00	Farm and Ranch Management	3	18-Aug-25	8-Dec-25	D2L	D2L	TOFCMP	D2L	D2L	Wiley	TSC Virtual	
23362	AGE	2108	H00	Agricultural Finance	3	18-Aug-25	8-Dec-25	D2L	D2L	TOFCMP	D2L	D2L	Wiley	TSC Virtual	
23262	AGY	1100	H00	General Crop Production	4	18-Aug-25	8-Dec-25	D2L	D2L	TOFCMP	D2L	D2L	Stillings	TSC Virtual	
23243	ASC	1100	H00	Animal Sciences	3	18-Aug-25	8-Dec-25	D2L	D2L	TOFCMP	D2L	D2L	Stillings	TSC Virtual	
23339	RAM	2005	H00	Range Management	3	18-Aug-25	8-Dec-25	D2L	D2L	TOFCMP	D2L	D2L	Stillings	TSC Virtual	
ART															
23391	ART	1110	PH6	Art Appreciation: AH1	3	18-Aug-25	8-Dec-25	0800AM	0915AM	TVC	219	T	Reiling	TSC Alamosa	
23440	ART	1110	H00	Art Appreciation: AH1	3	2-Sep-25	8-Dec-25	0900AM	0950AM	TOFCMP	D2L	F	Reiling	TSC Virtual	
AUTOMOTIVE															
23263	ASE	1002	200	Intro to the Automotive Shop	2	18-Aug-25	4-Sep-25	0930AM	1230PM	TORT		MTWRF	Kingery	TSC Alamosa	
24056	ASE	1010	200	Brakes 1	2	8-Sep-25	8-Oct-25	1000AM	1200PM	TORT		MTWR	Kingery	TSC Alamosa	
24057	ASE	1011	200	Brakes 2	2	9-Oct-25	10-Nov-25	1000AM	1200PM	TORT		MTWR	Kingery	TSC Alamosa	
23513	ASE	1020	200	Basic Auto Electricity	2	18-Aug-25	4-Sep-25	0100PM	0400PM	TORT		MTWRF	Kingery	TSC Alamosa	
24058	ASE	1022	200	Auto Elec Safety Systems	1	8-Sep-25	29-Sep-25	0100PM	0400PM	TORT		MTWR	Kingery	TSC Alamosa	
24059	ASE	1023	200	Starting & Charging Systems	2	30-Sep-25	21-Oct-25	0100PM	0400PM	TORT		MTWR	Kingery	TSC Alamosa	
24026	ASE	2010	200	Auto Pwr/ABS Brake Systems	2	11-Nov-25	8-Dec-25	1000AM	1200PM	TORT		MTWR	Kingery	TSC Alamosa	
24027	ASE	2021	200	Auto/Diesel Body Electrical	4	22-Oct-25	8-Dec-25	0100PM	0400PM	TORT		MTWR	Kingery	TSC Alamosa	
BIOLOGY															
23371	BIO	1006	200	Basic Anatomy and Physiology	4	18-Aug-25	8-Dec-25	1230PM	0215PM	TVC	209	TR	Wittler	TSC Alamosa	
23275	BIO	2101	H20	Human Anatomy&Phys I w/Lab:SC1	0	18-Aug-25	8-Dec-25	1000AM	1230PM	TVC	209	W	Wittler	TSC Alamosa	
23275	BIO	2101	H20	Human Anatomy&Phys I w/Lab:SC1	4	18-Aug-25	8-Dec-25	0800AM	0915AM	TVC	209	MW	Wittler	TSC Alamosa	
23397	BIO	2101	H21	Human Anatomy&Phys I w/Lab:SC1	0	18-Aug-25	8-Dec-25	1000AM	1230PM	TVC	209	M	Wittler	TSC Alamosa	
23397	BIO	2101	H21	Human Anatomy&Phys I w/Lab:SC1	4	18-Aug-25	8-Dec-25	0800AM	0915AM	TVC	209	MW	Wittler	TSC Alamosa	
23395	BIO	2102	200	Human Anatomy&Phys IIw/Lab:SC1	0	18-Aug-25	8-Dec-25	1000AM	1220PM	TVC	209	T	Wittler	TSC Alamosa	
23395	BIO	2102	200	Human Anatomy&Phys IIw/Lab:SC1	4	18-Aug-25	8-Dec-25	0800AM	0915AM	TVC	209	TR	Wittler	TSC Alamosa	
BUSINESS															
23974	BUS	1015	H20	Introduction to Business	3	18-Aug-25	8-Dec-25	12:30	150PM	TVC	210	MW	Velasquez	TSC Alamosa	
23771	BUS	1002	H20	Entrepreneurial Operations	3	18-Aug-25	8-Dec-25	0500PM	0630PM	TVC	214	W	Hammer	TSC Alamosa	
23565	BUS	1021	P60	Basic Workplace Skills	1	2-Sep-25	8-Dec-25	0745AM	0945AM	TVC	219	F	Maxwell	TSC Alamosa	
23769	BUS	2016	H00	Legal Environment of Business	3	18-Aug-25	8-Dec-25	D2L	D2L	TOFCMP	D2L	D2L	Duber-Smith	TSC Alamosa	
23975	BUS	2017	H20	Business Communications	3	18-Aug-25	8-Dec-25	0800AM	0920AM	TVC		TR	Velasquez	TSC Alamosa	
23009	BUS	2026	H20	Business Statistics	3	2-Sep-25	8-Dec-25	0100PM	0230PM	TVC	209	MW	Zverev	TSC Alamosa	
COMMUNICATION															
23592	COM	1150	H20	Public Speaking	3	18-Aug-25	8-Dec-25	0930AM	1045AM	TVC	208	MW	Geraci	TSC Alamosa	
COMPUTER INFORMATION SYSTEMS															
23485	CIS	1018	H00	Intro PC Applications	3	18-Aug-25	8-Dec-25	D2L	D2L	TOFCMP	D2L	D2L	Rasmussen	TSC Virtual	
24028	CIS	2023	H20	Linux	3	18-Aug-25	8-Dec-25	1100AM	1220PM	TVC	210	MW	STAFF	TSC Trinidad	

VALLEY CAMPUS FALL 2025 CLASS LIST (continued)

IN-PERSON, ON CAMPUS			COMBINATION ON/OFF CAMPUS		ONLINE										
CRN	SUB	Course	Section	Title	Hrs	Start	End	Start	End	Bld	Room	Days	Instructor	Campus	
COMPUTER NETWORKING															
24062	CNG	1001	H20	Network Fundamentals	3	18-Aug-25	8-Dec-25	1:00PM	2:50PM	Valley	206	M	Falk	TSC Alamosa	
24063	CNG	1020	H20	A+ Certification Prep	3	18-Aug-25	8-Dec-25	0100PM	0230PM	Valley	206	MW	STAFF	TSC Alamosa	
24064	CNG	1024	H20	Networking I: Network + (Certification Prep)	3	18-Aug-25	8-Dec-25	9:00AM	10:50AM	Valley	206	M	Falk	TSC Alamosa	
24065	CNG	1033	H20	Firewalls/Network Security	3	18-Aug-25	8-Dec-25	1000AM	1050AM	Valley	206	R	STAFF	TSC Alamosa	
24066	CNG	1032	H20	Network Security Fundamentals	3	18-Aug-25	8-Dec-25	11:00AM	12:50PM	Valley	206	T	Falk	TSC Alamosa	
24067	CNG	1042	H20	Intro to Cloud Computing	3	18-Aug-25	8-Dec-25	11:00AM	12:50PM	Valley	206	M	Falk	TSC Alamosa	
24068	CNG	1036	H20	Guide to IT Disaster Recovery	3	18-Aug-25	8-Dec-25	9:00AM	10:50AM	Valley		TR	Falk	TSC Alamosa	
24069	CNG	2057	H20	Network Defense/Countermeasures	3	18-Aug-25	8-Dec-25	0800AM	0920AM	Valley	205	MW	Williams	TSC Alamosa	
24070	CNG	2040	H20	Virtual Environment Admin	3	18-Aug-25	8-Dec-25	0930AM	1050AM	Valley	205	MW	Williams	TSC Alamosa	
24071	CNG	2056	H20	Vulnerability Assessment 1	3	18-Aug-25	8-Dec-25	1100AM	1220PM	Valley	205	MW	Williams	TSC Alamosa	
24072	CNG	2058	H20	Digital Forensics	3	18-Aug-25	8-Dec-25	0800AM	0920AM	Valley	205	TR	Williams	TSC Alamosa	
24072	CNG	2058	H20	Digital Forensics	1	18-Aug-25	8-Dec-25	1100AM	1150AM	Valley	205	T	Williams	TSC Alamosa	
24073	CNG	2059	H20	Enterprise Security	3	18-Aug-25	8-Dec-25	0930AM	1050AM	Valley	205	TR	Williams	TSC Alamosa	
24073	CNG	2059	H20	Enterprise Security	1	18-Aug-25	8-Dec-25	1100AM	1150AM	Valley	205	R	Williams	TSC Alamosa	
CONSTRUCTION															
23612	CON	1057	200	NCCER Core	5	18-Aug-25	14-Sep-25	0800AM	1200PM	TVC	101	MTWRF	Martinez	TSC Alamosa	
23659	CON	1057	201	NCCER Core	5	25-Sep-25	20-Oct-25	0800AM	1200PM	TVC	101	MTWRF	Martinez	TSC Alamosa	
23661	CON	1057	202	NCCER Core	5	30-Oct-25	29-Nov-25	0800AM	1200PM	TVC	101	MTWRF	Martinez	TSC Alamosa	
23660	CAR	1070	201	Clinical:Construction Lab I	3	18-Aug-25	14-Sep-25	0100PM	0500PM	TOFCMP	D2L	MTWRF	Martinez	TSC Alamosa	
23662	CAR	1070	202	Clinical:Construction Lab I	3	25-Sep-25	20-Oct-25	0100PM	0500PM	TOFCMP	D2L	MTWRF	Martinez	TSC Alamosa	
23609	CAR	1070	200	Clinical:Construction Lab I	3	30-Oct-25	29-Nov-25	0100PM	0500PM	TOFCMP	D2L	MTWRF	Martinez	TSC Alamosa	
COSMETOLOGY															
23539	COS	1010	200	Intro Color	2	18-Aug-25	8-Dec-25	0800AM	0955AM	TVC	117	F	Presley	TSC Alamosa	
23515	COS	1011	200	Inter I Color	2	18-Aug-25	8-Dec-25	0900AM	0955AM	TVC	107	TR	Presley	TSC Alamosa	
23540	COS	1020	200	Intro Cutting	2	18-Aug-25	8-Dec-25	0100PM	0255PM	TVC	117	F	Presley	TSC Alamosa	
23516	COS	1021	200	Inter I Cutting	2	18-Aug-25	8-Dec-25	0200PM	0255PM	TVC	117	MW	Varela	TSC Alamosa	
23541	COS	1030	200	Intro Styling	2	18-Aug-25	8-Dec-25	0300PM	0455PM	TVC	117	F	Presley	TSC Alamosa	
23517	COS	1031	200	Inter I Styling	2	18-Aug-25	8-Dec-25	1000AM	1155AM	TVC	120	MW	Presley	TSC Alamosa	
23542	COS	1040	200	Intro to Chemical Texture	1	18-Aug-25	8-Dec-25	1000AM	1055AM	TVC	117	F	Presley	TSC Alamosa	
23471	COS	1041	200	Intermed I: Chemical Texture	1	18-Aug-25	8-Dec-25	0900AM	0955AM	TVC	117	W	Varela	TSC Alamosa	
23543	COS	1050	H00	Laws, Rules, and Regulations	1	18-Aug-25	8-Dec-25	D2L	D2L	TOFCMP	D2L	F	Presley	TSC Alamosa	
23544	COS	1061	200	Inter I: Infection Control	1	18-Aug-25	8-Dec-25	1100AM	1155AM	TVC	117	W	Sandoval	TSC Alamosa	
23470	COS	2003	200	Inter I: Hair and Scalp	1	18-Aug-25	8-Dec-25	0800AM	0855AM	TVC	117	M	Presley	TSC Alamosa	
23308	COS	2010	200	Inter II Color	2	18-Aug-25	8-Dec-25	1000AM	1200PM	TVC	117	MW	Sandoval	TSC Alamosa	
23383	COS	2011	200	Adv Color	2	18-Aug-25	8-Dec-25	1000AM	1055AM	TVC	117	TR	Varela	TSC Alamosa	
23376	COS	2020	200	Inter II Cutting	2	18-Aug-25	8-Dec-25	0300PM	0355PM	TVC	117	MW	Varela	TSC Alamosa	
23312	COS	2021	200	Adv Cutting	2	18-Aug-25	8-Dec-25	1000AM	1055AM	TVC	117	MW	Varela	TSC Alamosa	
23313	COS	2030	200	Inter II Styling	2	18-Aug-25	8-Dec-25	0100PM	0155PM	TVC	206	MW	Varela	TSC Alamosa	
23314	COS	2031	200	Adv Styling	1	18-Aug-25	8-Dec-25	0800AM	0855AM	TVC	107	W	Varela	TSC Alamosa	
23315	COS	2040	200	Intermediate II: Chem Texture	1	18-Aug-25	8-Dec-25	1100AM	1155AM	TVC	120	T	Sandoval	TSC Alamosa	
23316	COS	2041	200	Advanced Chemical Texture	1	18-Aug-25	8-Dec-25	1100AM	1155AM	TVC	117	R	Sandoval	TSC Alamosa	
23545	COS	2050	H00	Bus Mgmt/Per Skills/Ethics	1	18-Aug-25	8-Dec-25	D2L	D2L	TOFCMP	D2L	F	Presley	TSC Alamosa	
23317	COS	2060	200	Inter II: Infection Control	2	18-Aug-25	8-Dec-25	0200PM	0255PM	TVC	120	TR	Sandoval	TSC Alamosa	
23318	COS	2061	200	Adv Infection Control	1	18-Aug-25	8-Dec-25	0300PM	0355PM	TVC	117	T	Sandoval	TSC Alamosa	
23607	COS	2062	200	Adv II Disinfect/Sanitiz/Safety	3	18-Aug-25	8-Dec-25	0800AM	0955AM	TVC	117	TR	Sandoval	TSC Alamosa	
23374	COS	2088	200	Practicum	3	18-Aug-25	8-Dec-25	0400PM	0525PM	TVC	117	TR	Sandoval	TSC Alamosa	
24033	COS	1060	H02	Intro Infection Control	2	18-Aug-25	8-Dec-25	D2L	D2L	TOFVMP	D2L	D2L	Sandoval	TSC Alamosa	
24034	COS	1003	200	Intro Hair and Scalp	1	18-Aug-25	8-Dec-25	0800AM	0855AM	TVC	117	M	Presley	TSC Alamosa	
DATA SCIENCE															
24030	DAT	1001	H20	Introduction to Data Science	3	18-Aug-25	8-Dec-25	1100AM	1220AM	TVC	209	TR	Zverev	TSC Trinidad	

VALLEY CAMPUS FALL 2025 CLASS LIST (continued)

IN-PERSON, ON CAMPUS			COMBINATION ON/OFF CAMPUS		ONLINE										
CRN	SUB	Course	Section	Title	Hrs	Start	End	Start	End	Bld	Room	Days	Instructor	Campus	
DENTAL ASSISTANT															
23380	DEA	1001	200	Dental Terminology	1	18-Aug-25	8-Dec-25	0600PM	0655PM	TVC	109	R	Benavidez	TSC Alamosa	
23380	DEA	1001	200	Dental Terminology	1	18-Aug-25	8-Dec-25	0600PM	0655PM	TVC	109	R	Barbosa	TSC Alamosa	
23381	DEA	1011	200	Intro to Dental Practices	1	18-Aug-25	8-Dec-25	0600PM	0655PM	TVC	109	T	Benavidez	TSC Alamosa	
23381	DEA	1011	200	Intro to Dental Practices	1	18-Aug-25	8-Dec-25	0600PM	0655PM	TVC	109	T	Barbosa	TSC Alamosa	
23378	DEA	1015	200	Infection Control	3	18-Aug-25	8-Dec-25	0700PM	0900PM	TVC	109	T	Barbosa	TSC Alamosa	
23378	DEA	1015	200	Infection Control	0	18-Aug-25	8-Dec-25	0800AM	1200PM	TOFCMP		S	Barbosa	TSC Alamosa	
23378	DEA	1015	200	Infection Control	0	18-Aug-25	8-Dec-25	0800AM	1200PM	TOFCMP		S	Benavidez	TSC Alamosa	
23378	DEA	1015	200	Infection Control	3	18-Aug-25	8-Dec-25	0700PM	0900PM	TVC	109	T	Benavidez	TSC Alamosa	
23379	DEA	1023	200	Dental Materials I	0	18-Aug-25	8-Dec-25	0100PM	0500PM	TOFCMP		S	Benavidez	TSC Alamosa	
23379	DEA	1023	200	Dental Materials I	3	18-Aug-25	8-Dec-25	0700PM	0900PM	TVC	109	R	Benavidez	TSC Alamosa	
23379	DEA	1023	200	Dental Materials I	0	18-Aug-25	8-Dec-25	0100PM	0500PM	TOFCMP		S	Barbosa	TSC Alamosa	
23379	DEA	1023	200	Dental Materials I	3	18-Aug-25	8-Dec-25	0700PM	0900PM	TVC	109	R	Barbosa	TSC Alamosa	
23379	DEA	1023	200	Dental Materials I	0	18-Aug-25	8-Dec-25	0100PM	0500PM	TOFCMP		S	Barbosa	TSC Alamosa	
23379	DEA	1023	200	Dental Materials I	3	18-Aug-25	8-Dec-25	0700PM	0900PM	TVC	109	R	Benavidez	TSC Alamosa	
23379	DEA	1023	200	Dental Materials I	0	18-Aug-25	8-Dec-25	0100PM	0500PM	TOFCMP		S	Benavidez	TSC Alamosa	
23379	DEA	1023	200	Dental Materials I	3	18-Aug-25	8-Dec-25	0700PM	0900PM	TVC	109	R	Barbosa	TSC Alamosa	
EARLY CHILDHOOD															
23227	ECE	1011	H00	Intro to Early Childhood Educ	3	18-Aug-25	8-Dec-25	0530PM	0650PM	TOFCMP	D2L	MW	Atencio	TSC Alamosa	
23512	ECE	1045	H00	Intro to ECE Techniques	3	18-Aug-25	8-Dec-25	0530PM	0650PM	TOFCMP	D2L	TR	Plane	TSC Alamosa	
24039	ECE	1111	H00	Infant/Toddler Theory/Practice	3	18-Aug-25	8-Dec-25	0700PM	0820PM	TOFCMP	D2L	MW	Atencio	TSC Alamosa	
23583	ECE	1125	H00	Infant/Toddler Lab Tech	3	18-Aug-25	8-Dec-25	0830PM	0915PM	TOFCMP	D2L	MW	Briones	TSC Alamosa	
23973	ECE	2631	H00	Language & Cognition	3	18-Aug-25	8-Dec-25	0500PM	0650PM	TOFCMP	D2L	F	Plane	TSC Alamosa	
23972	ECE	2621	H00	Curriculum Methods/Techniques	3	18-Aug-25	8-Dec-25	0700PM	0850PM	TOFCMP	D2L	F	Briones	TSC Alamosa	
ECONOMICS															
23832	ECO	2001	H20	Prin of Macroeconomics: SS1	3	18-Aug-25	8-Dec-25	1100AM	1220PM	Valley	210	TR	Velasquez	TSC Trinidad	
EDUCATION															
23016	EDU	1088	H00	Practicum I	1	18-Aug-25	8-Dec-25	D2L	D2L	TOFCMP	D2L	D2L	Trujillo	TSC Alamosa	
24075	EDU	2611	H00	Introduction to Education	3	18-Aug-25	8-Dec-25	0530PM	0800PM	TOFCMP	D2L	W	Trujillo	TSC Trinidad	
EMERGENCY MEDICAL															
23761	EMS	1021	250	EMT Fundamentals	0	18-Aug-25	8-Dec-25	0800AM	0500PM	TVC	AHSB-10	S	Rydgren	TSC Alamosa	
23761	EMS	1021	250	EMT Fundamentals	3	18-Aug-25	8-Dec-25	0600PM	1000PM	TVC	AHSB-10	MW	Rydgren	TSC Alamosa	
24031	EMS	1021	H20	EMT Fundamentals	3	18-Aug-25	17-Sep-25	0600PM	1000PM	TVC	AHSB-10	MWS	Abeyta	TSC Alamosa	
23453	EMS	1022	250	EMT Medical Emergencies	0	18-Sep	29-Oct	0800AM	0500PM	TVC		S	Rydgren	TSC Alamosa	
23453	EMS	1022	250	EMT Medical Emergencies	4	18-Sep	29-Oct	0600PM	1000PM	TVC	AHSB-10	MW	Rydgren	TSC Alamosa	
23857	EMS	1022	H20	EMT Medical Emergencies	4	18-Sep	29-Oct	0600PM	1000PM	TVC		MWS	Abeyta	TSC Alamosa	
23454	EMS	1023	250	EMT Trauma Emergencies	2	30-Oct	14-Nov	0600PM	1000PM	TVC	AHSB-10	MW	Rydgren	TSC Alamosa	
23454	EMS	1023	250	EMT Trauma Emergencies	0	30-Oct	14-Nov	0800AM	0500PM	TVC	AHSB-10	S	Rydgren	TSC Alamosa	
23858	EMS	1023	H20	EMT Trauma Emergencies	2	30-Oct	14-Nov	0500PM	1000PM	TVC		MWS	Abeyta	TSC Alamosa	
23455	EMS	1024	250	EMT Special Considerations	0	15-Nov	11-Dec	0800AM	0500PM	TVC	AHSB-10	S	Rydgren	TSC Alamosa	
23455	EMS	1024	250	EMT Special Considerations	2	15-Nov	11-Dec	0600PM	1000PM	TVC	AHSB-10	MW	Rydgren	TSC Alamosa	
23859	EMS	1024	H20	EMT Special Considerations	2	15-Nov	11-Dec	0600PM	1000PM	TVC		MWS	Abeyta	TSC Alamosa	
24036	EMS	1026	251	EMT Basic Refresher	2	18-Aug-25	8-Dec-25	0600PM	1000PM	TVC		MW	Dustin	TSC Alamosa	
23456	EMS	1070	250	EMT Clinical	1	18-Sep	11-Dec	TBA	TBA	TBA	TBA	TBA	Rydgren	TSC Alamosa	
23860	EMS	1070	H20	EMT Clinical	1	18-Sep	11-Dec	TBA	TBA	TBA	TBA	TBA	Abeyta	TSC Alamosa	
ENGLISH															
23007	ENG	1021	200	English Composition I:CO1	3	18-Aug-25	8-Dec-25	1100AM	1215PM	TVC	208	TR	Geraci	TSC Alamosa	
HISTORY															
23767	HIS	1110	PH6	The World: Antiquity-1500: HI1	3	18-Aug-25	8-Dec-25	0900AM	0950AM	TVC	219	MW	Boone	TSC Alamosa	
23610	HIS	1210	PH6	US History to Reconst: HI1	3	2-Sep-25	8-Dec-25	0800AM	0915AM	TVC	214	TR	Boone	TSC Alamosa	
23764	HIS	2105	P60	Women in U.S. History: HI1	3	18-Aug-25	8-Dec-25	0800AM	0915AM	TVC		TR	Boone	TSC Alamosa	
24050	HIS	2015	P60	20th Century World History: HI1	3	2-Sep-25	8-Dec-25	1000AM	1050AM	TVC	219	MW	Boone	TSC Alamosa	
24051	HIS	2135	P60	Colorado History: HI1	3	2-Sep-25	8-Dec-25	0100PM	0150PM	TVC	219	MW	Boone	TSC Alamosa	
HEALTH PROFESSIONAL															
23584	HPR	1039	PH7	Medical Terminology	2	18-Aug-25	8-Dec-25	0300PM	0430PM	TVC	103	R	O'Brien	TSC Alamosa	

VALLEY CAMPUS FALL 2025 CLASS LIST (continued)

IN-PERSON, ON CAMPUS			COMBINATION ON/OFF CAMPUS		ONLINE									
CRN	SUB	Course	Section	Title	Hrs	Start	End	Start	End	Bld	Room	Days	Instructor	Campus
LAW ENFORCEMENT ACADEMY														
23641	LEA	1001	200	Basic Police Academy I	6	18-Aug-25	8-Dec-25	0600PM	1000PM	TSLVLE		TWR	Kindschuh	TSC Alamosa
24086	LEA	1005	200	Basic Law	8	9-Sep-25	8-Dec-25	0600PM	1000PM	TSLVLE		TWR	Kindschuh	TSC Alamosa
23650	LEA	1006	200	Arrest Control Techniques	3	4-Oct-25	9-Nov-25	0800AM	0500PM	TSLVLE		SU	Kindschuh	TSC Alamosa
MANAGEMENT														
23775	MAN	1002	H00	Ethics & Values	1	18-Aug-25	8-Dec-25	D2L	D2L	TOFCMP	D2L	D2L	Hammer	TSC Virtual
23777	MAN	1017	H00	Time Management	1	18-Aug-25	8-Dec-25	0930AM	1050AM	TOFCMP	D2L	W	Hammer	TSC Virtual
23778	MAN	2026	H00	Principles of Management	3	2-Sep-25	8-Dec-25	D2L	D2L	TOFCMP	D2L	D2L	Hammer	TSC Virtual
23967	MAN	3050	X00	Innovation and Change Mgmt	3	18-Aug-25	8-Dec-25	D2L	D2L	TOFCMP	D2L	D2L	Velasquez	Online
MARKETING														
23958	MAR	1060	H00	Customer Service	3	18-Aug-25	8-Dec-25	D2L	D2L	TOFCMP	D2L	D2L	Duber-Smith	TSC Virtual
23960	MAR	2016	H00	Principles of Marketing	3	18-Aug-25	8-Dec-25	D2L	D2L	TOFCMP	D2L	D2L	Duber-Smith	TSC Virtual
MATHEMATICS														
23593	MAT	1140	200	Career Math:	3	18-Aug-25	8-Dec-25	0300PM	0350PM	TVC	208	MTW	Zverev	TSC Alamosa
23594	MAT	1260	H20	Intro to Statistics: MA1	3	18-Aug-25	8-Dec-25	0100PM	0230PM	TVC	208	TR	Zverev	TSC Alamosa
23514	MAT	1260	H00	Intro to Statistics: MA1	3	18-Aug-25	8-Dec-25	D2L	D2L	TOFCMP	D2L	D2L	Emerick	TSC Virtual
23596	MAT	1340	200	College Algebra: MA1	4	18-Aug-25	8-Dec-25	1000AM	1050AM	TVC	208	MTWR	Zverev	TSC Alamosa
MEDICAL ASSISTING PROFESSIONAL														
23370	MAP	1010	PH7	Medical Office Administration	4	18-Aug-25	8-Dec-25	0330PM	0730PM	TVC	103	T	O'Brien	TSC Alamosa
23396	MAP	1020	PH7	Medical Office Financial Mgmt	4	18-Aug-25	8-Dec-25	1255PM	0330PM	TVC	103	W	O'Brien	TSC Alamosa
23369	MAP	1083	200	Medical Assistant Internship	4	18-Aug-25	8-Dec-25	1100AM	1155AM	TVC	107	R	O'Brien	TSC Alamosa
23367	MAP	2040	PH7	Medical Assist Clinical Skills	4	18-Aug-25	8-Dec-25	0230PM	0630PM	TVC	103	M	O'Brien	TSC Alamosa
23368	MAP	2069	PH7	Review- Medical Asst Natl Exam	1	18-Aug-25	8-Dec-25	0100PM	0200PM	TVC	103	M	O'Brien	TSC Alamosa
NAIL TECHNICIAN														
23252	NAT	1010	H20	Intro to Nail Care	3	18-Aug-25	8-Dec-25	0800AM	0925AM	TVC	122	MW	Sandoval	TSC Alamosa
23321	NAT	1011	200	Inter I Nail Care	0	18-Aug-25	8-Dec-25	0900AM	0955AM	TVC	120	M	Sandoval	TSC Alamosa
23322	NAT	2010	200	Advanced Nail Care	2	18-Aug-25	8-Dec-25	1000AM	1055AM	TVC	117C	TR	Sandoval	TSC Alamosa
23323	NAT	2011	200	Nail Enhancements	0	18-Aug-25	8-Dec-25	0100PM	0325PM	TVC	122	TR	Sandoval	TSC Alamosa
NURSING ASSISTANT														
23557	NUA	1001	201	Nurse Aide Health Care Skills	4			0500PM	0900PM	TVC	AHSB-11	MTW	Mobley	TSC Alamosa
23328	NUA	1001	252	Nurse Aide Health Care Skills	4			0500PM	0900PM	TVC	AHSB-11	MTW	Mobley	TSC Alamosa
23004	NUA	1070	201	Nurse Aide Clinical Experience	1			0530AM	0330PM	TOFCMP		UFS	Mobley	TSC Alamosa
NURSING														
23336	NUR	1001	200	Pharmacology Calculations	1	18-Aug-25	8-Dec-25	0200PM	0400PM	TVC	AHSB-17	T	Wilner	TSC Alamosa
23365	NUR	1009	200	Fundamentals of Nursing	0	18-Aug-25	8-Dec-25	0800AM	1130AM	TVC	AHSB-17	M	Malouff	TSC Alamosa
23365	NUR	1009	200	Fundamentals of Nursing	6	18-Aug-25	8-Dec-25	0800AM	0400PM	TVC	AHSB-17	TW	Malouff	TSC Alamosa
23831	NUR	1009	250	Fundamentals of Nursing	6	18-Aug-25	8-Dec-25	0400PM	0800PM	TVC	AHSB-17	M	Haslett	TSC Alamosa
23831	NUR	1009	250	Fundamentals of Nursing	0	18-Aug-25	8-Dec-25	0600AM	0600PM	TVC	AHSB-17	US	Haslett	TSC Alamosa
23002	NUR	1012	200	Basic Concepts of Pharmacology	2	18-Aug-25	8-Dec-25	0930AM	1130AM	TVC	AHSB-17	F	Malouff	TSC Alamosa
23830	NUR	1012	250	Basic Concepts of Pharmacology	2	18-Aug-25	8-Dec-25	0400PM	0800PM	TVC	AHSB-17	T	Lane	TSC Alamosa
23366	NUR	2006	200	Adv Concepts of Med/Surg NSG I	0	18-Aug-25	8-Dec-25	0830AM	1130AM	TVC	AHSB-17	R	Garcia	TSC Alamosa
23366	NUR	2006	200	Adv Concepts of Med/Surg NSG I	6.5	18-Aug-25	8-Dec-25	0530AM	0600PM	TVC	AHSB-17	MTW	Garcia	TSC Alamosa
23990	NUR	2006	250	Adv Concepts of Med/Surg NSG I	6.5	18-Aug-25	8-Dec-25	0400pm	0700pm	TVC	AHSB-17	R	Hendricks	TSC Alamosa
23990	NUR	2006	250	Adv Concepts of Med/Surg NSG I	6.5	18-Aug-25	8-Dec-25	tba	tba	TVC	tba	SU	Hendricks	TSC Alamosa
23247	NUR	2011	200	Psychiatric-Mental Health NSG	4	18-Aug-25	8-Dec-25	0900AM	1230PM	TVC	AHSB-17	F	Ramstetter	TSC Alamosa
23003	NUR	2012	200	Pharmacology II	2	18-Aug-25	8-Dec-25	1230PM	0230PM	TVC	AHSB-17	R	Garcia	TSC Alamosa
24032	NUR	2012	250	Pharmacology II	2	18-Aug-25	8-Dec-25	0400pm	0800pm	TVC	AHSB-17	R	STAFF	TSC Alamosa
PHYSICAL EDUCATION														
23639	PED	1001	201	Conditioning Lab	1	18-Aug-25	8-Dec-25	0300PM	0550PM	TVC	110	F	Joseph	TSC Alamosa
23474	PED	2037	200	Varsity Sports	1	18-Aug-25	8-Dec-25	0300PM	0550PM	TVC	110	MTWR	Joseph	TSC Alamosa
23475	PED	2037	201	Varsity Sports	1	18-Aug-25	8-Dec-25	0300PM	0550PM	TVC	110	MTWR	Joseph	TSC Alamosa
23638	PED	2037	202	Varsity Sports	1	18-Aug-25	8-Dec-25	0300PM	0550PM	TVC	110	MTWR	Joseph	TSC Alamosa

VALLEY CAMPUS FALL 2025 CLASS LIST (continued)

IN-PERSON, ON CAMPUS				COMBINATION ON/OFF CAMPUS			ONLINE										
CRN	SUB	Course	Section	Title	Hrs	Start	End	Start	End	Bld	Room	Days	Instructor	Campus			
PSYCHOLOGY																	
23001	PSY	1001	200	General Psychology I: SS3	3	18-Aug-25	8-Dec-25	1100AM	1215PM	TVC	109	TR	Brydges	TSC Alamosa			
23981	PSY	2770	H00	Intro to Forensic Psychology	3	18-Aug-25	8-Dec-25	1100AM	1150AM	TOFCMP	D2L	MW	Brydges	TSC Virtual			
23652	PSY	2221	H00	Social Psychology: SS3	3	18-Aug-25	8-Dec-25	1000AM	1050AM	TOFCMP	D2L	MW	Laurel	TSC Virtual			
SOCIOLOGY																	
23640	SOC	1001	200	Intro to Sociology I : SS3	3	18-Aug-25	8-Dec-25	0930AM	1045AM	TVC	109	TR	Rodriguez	TSC Alamosa			
THEATRE																	
22578	THE	1005	H00	Theatre Appreciation: AH1	3	3-Sep-24	9-Dec-24	0200PM	0315PM	TOFCMP	D2L	T	Reorda	TSC Virtual			
WELDING																	
23324	WEL	1002	200	Oxy-fuel Joining Processes	4	18-Aug-25	8-Dec-25	0930AM	1145AM	TVC	101	MW	Exley	TSC Alamosa			
23326	WEL	1013	200	Oxyfuel and Plasma Cutting	2	18-Aug-25	8-Dec-25	0800AM	0925AM	TVC	206	MTWR	Exley	TSC Alamosa			
23325	WEL	1021	200	Structural Welding I	3	18-Aug-25	8-Dec-25	0100PM	0215PM	TVC	101	MTWR	Exley	TSC Alamosa			
23364	WEL	1022	200	Structural Welding II	3	18-Aug-25	8-Dec-25	0230PM	0400PM	TVC	101	TR	Exley	TSC Alamosa			
23327	WEL	1024	200	Gas Tungsten Arc Welding I	4	18-Aug-25	8-Dec-25	0930AM	1145AM	TVC	101	TR	Exley	TSC Alamosa			
23363	WEL	1025	200	Intro-Gas Metal Arc Welding	4	18-Aug-25	8-Dec-25	0230PM	0400PM	TVC	101	MW	Exley	TSC Alamosa			

NOTES:

COLOTADO ONLINE FALL 2025 CLASS LIST

#CRN	SUB	Course	Sect.	Course Description	Hrs	Start	End	Instructor	Campus
TBD									

COLORADO ONLINE FALL 2025 CLASS LIST *(continued)*

#CRN	SUB	Course	Sect.	Course Description	Hrs	Start	End	Instructor	Campus
TBD									

COLORADO ONLINE FALL 2025 CLASS LIST *(continued)*

#CRN	SUB	Course	Sect.	Course Description	Hrs	Start	End	Instructor	Campus
TBD									

COLORADO ONLINE FALL 2025 CLASS LIST *(continued)*

#CRN	SUB	Course	Sect.	Course Description	Hrs	Start	End	Instructor	Campus
TBD									

COLORADO ONLINE FALL 2025 CLASS LIST *(continued)*

#CRN	SUB	Course	Sect.	Course Description	Hrs	Start	End	Instructor	Campus
TBD									

COLORADO ONLINE FALL 2025 CLASS LIST *(continued)*

#CRN	SUB	Course	Sect.	Course Description	Hrs	Start	End	Instructor	Campus
TBD									

COLORADO ONLINE FALL 2025 CLASS LIST *(continued)*

#CRN	SUB	Course	Sect.	Course Description	Hrs	Start	End	Instructor	Campus
------	-----	--------	-------	--------------------	-----	-------	-----	------------	--------

TBD

NOTES:

STATEWIDE GUARANTEED TRANSFER

CRN	Title				
AGE 102	Agriculture Economics	GT-SS1	ECO 211	Gender in the Economy	GT-SS1
AGR 260	World Interdependence: Pop & Food	GT-SS3	ECO 245	Environmental Economics	GT-SS1
AGY 240	Introductory Soil Science, with Lab	GT-SC1	ENG 121	English Composition I	GT-CO1
ANT 101	Cultural Anthropology	GT-SS3	ENG 122	English Composition II	GT-CO2
ANT 102	Cultural Anthropology Laboratory	GT-SS3	ENG 201	Eng. Comp III: Writing for Pub. Discourse	GT-CO3
ANT 103	Archaeology Laboratory	GT-SS3	ENV 101	Intro to Env. Science, with Lab	GT-SC1
ANT 104	Physical Anthropology Laboratory	GT-SS3	ENV 110	Natural Disasters	GT-SC2
ANT 107	Introduction to Archaeology	GT-SS3	ETH 200	Introduction to Ethnic Studies	GT-SS3
ANT 108	Archaeology of World Rock Art	GT-SS3	FRE 211	French Language III	GT-AH4
ANT 111	Physical Anthropology	GT-SC1	FRE 212	French Language IV	GT-AH4
ANT 201	INTRO to Forensic Anthropology	GT-SS3	GEO 105	World Regional Geography	GT-SS2
ANT 215	Indians of North America	GT-SS3	GEO 106	Human Geography	GT-SS2
ANT 250	Medical Anthropology	GT-SS3	GEO 111	POHI Geography - Landforms, with Lab	GT-SC1
ART 110	Art Appreciation	GT-AH1	GEO 112	POHI Geography-Weather & Climate/ Lab	GT-SC1
ART 111	Art History Ancient to Medieval	GT-AH1	GER 211	German Language III	GT-AH4
ART 112	Art History Renaissance to Modern	GT-AH1	GER 212	German Language IV	GT-AH4
ART 207	Art History - 1900 to Present	GT-AH1	GEY 108	Geology of U.S. National Parks	GT-SC2
AST 101	Astronomy I, with Lab	GT-SC1	GEY 111	Physical Geology, with Lab	GT-SC1
AST 102	Astronomy II, with Lab	GT-SC1	GEY 112	Historical Geology, with Lab	GT-SC1
AST 150	Astrobiology	GT-SC2	GEY 135	Environmental Geology, with Lab	GT-SC1
AST 155	Astronomy Ancient Cultures	GT-SC2	HIS 101	Western Civilization: Antiquity - 1650	GT-HI1
AST 160	Cosmology	GT-SC2	HIS 102	Western Civilization: 1650 - Present	GT-HI1
BIO 103	Principles of Animal Biology	GT-SC2	HIS 111	The World: Antiquity - 1500	GT-HI1
BIO 104	Biology: A Human Approach	GT-SC1	HIS 112	World Civilization II	GT-HI1
BIO 105	Science of Biology, with Lab	GT-SC1	HIS 121	U.S. History to Reconstruction	GT-HI1
BIO 111	General College Biology I. with Lab	GT-SC1	HIS 122	U.S. History Since the Civil War	GT-HI1
BIO 112	General College Biology II, with Lab	GT-SC1	HIS 203	Civil War Era in American History	GT-HI1
BIO 116	Introduction to Human Disease	GT-SC2	HIS 205	Women in World History	GT-HI1
BIO 201	Anatomy & Physiology I, with Lab	GT-SC1	HIS 207	American Environmental History	GT-HI1
BIO 202	Anatomy & Physiology II, with Lab	GT-SC1	HIS 208	American Indian History	GT-HI1
BIO 204	Microbiology, with Lab	GT-SC1	HIS 215	Women in U.S. History	GT-HI1
BIO 208	Gen. College Microbiology, with Lab	GT-SC1	HIS 218	History of Science and Technology	GT-HI1
BIO 220	General Zoology, with Lab	GT-SC1	HIS 225	Colorado History	GT-HI1
BIO 221	Botany, with Lab	GT-SC1	HIS 235	History of the American West	GT-HI1
BIO 224	Genetics	GT-SC1	HIS 236	U.S. History Since 1945	GT-HI1
CHE 101	Introduction to Chemistry I, with Lab	GT-SC1	HIS 243	History of Modern China	GT-HI1
CHE 102	Introduction to Chemistry II, with Lab	GT-SC1	HIS 244	History of Latin America	GT-HI1
CHE 105	Chemistry in Context, with Lab	GT-SC1	HIS 245	U.S. in the World	GT-HI1
CHE 111	General College Chemistry I, with Lab	GT-SC1	HIS 247	20th Century World History	GT-HI1
CHE 112	General College Chemistry II, with Lab	GT-SC1	HIS 249	History of Islamic Civilization	GT-HI1
COM 220	Inter-cultural Communication	GT-SS3	HIS 250	African American History	GT-HI1
CRJ 110	Introduction to Criminal Justice	GT-SS3	HIS 251	History of Christianity in the World	GT-HI1
DAN 125	History of Dance I	GT-AH1	HIS 255	The Middle Ages	GT-HI1
ECO 101	Economics of Social Issues	GT-SS1	HIS 259	Modern Middle East	GT-HI1
ECO 201	Principles of Macroeconomics	GT-SS1	HIS 260	U S Foreign Relations History	GT-HI1
ECO 202	Principles of Microeconomics	GT-SS1	HIS 265	Writing About History	GT-CO3
			HUM 103	Introduction to Film Art	GT-AH2

STATEWIDE GUARANTEED TRANSFER (continued)

HUM 115	World Mythology	GT-AH2	PHY 105	Conceptual Physics, with Lab	GT-SC1
HUM 121	Humanities: Early Civilization	GT-AH2	PHY 107	Energy Science & Tech., with Lab	GT-SC1
HUM 122	Humanities: Medieval-Modern	GT-AH2	PHY 111	Physics: Algebra Based I, with Lab	GT-SC1
HUM 123	Humanities: Modern World	GT-AH2	PHY 112	Physics: Algebra Based II, with Lab	GT-SC1
ITA 211	Italian Language III	GT-AH4	PHY 211	Physics: Calculus Based I, with Lab	GT-SC1
ITA 212	Italian Language IV	GT-AH4	PHY 212	Physics: Calculus Based II, with Lab	GT-SC1
JOU 105	Introduction to Mass Media	GT-SS3	POS 105	Introduction to Political Science	GT-SS1
JPN 211	Japanese Language III	GT-AH4	POS 111	American Government	GT-SS1
JPN 212	Japanese Language IV	GT-AH4	POS 125	American State & Local Government	GT-SS1
LIT 115	Introduction to Literature I	GT-AH2	POS 205	International Relations	GT-SS1
LIT 201	World Literature to 1600	GT-AH2	POS 215	Current Political Issues	GT-SS1
LIT 202	World Literature After 1600	GT-AH2	POS 225	Comparative Government	GT-SS1
LIT 205	Ethnic Literature	GT-AH2	PSY 101	General Psychology I	GT-SS3
LIT 211	American Literature to Civil War	GT-AH2	PSY 102	General Psychology II	GT-SS3
LIT 212	American Literature After Civil War	GT-AH2	PSY 205	Psychology of Gender	GT-SS3
LIT 221	British Literature to 1700	GT-AH2	PSY 217	Human Sexuality	GT-SS3
LIT 222	British Literature Since 1700	GT-AH2	PSY 226	Social Psychology	GT-SS3
LIT 225	Introduction to Shakespeare	GT-AH2	PSY 227	Psychology of Death and Dying	GT-SS3
LIT 246	Literature of Women	GT-AH2	PSY 235	Human Growth & Development	GT-SS3
LIT 259	Survey of African American Literature	GT-AH2	PSY 238	Child Development	GT-SS3
LIT 268	Celtic Literature	GT-AH2	PSY 240	Health Psychology	GT-SS3
MAT 120	Mathematics for Liberal Arts	GT-MA1	PSY 249	Abnormal Psychology	GT-SS3
MAT 121	College Algebra	GT-MA1	PSY 265	Psychology of Personality	GT-SS3
MAT 122	College Trigonometry	GT-MA1	RUS 211	Russian Language III	GT-AH4
MAT 123	Finite Mathematics	GT-MA1	RUS 212	Russian Language IV	GT-AH4
MAT 125	Survey of Calculus	GT-MA1	SCI 105	Science in Society	GT-SC2
MAT 135	Introduction to Statistics	GT-MA1	SCI 155	Integrated Science I: Physics & Chemistry, with Lab	GT-SC1
MAT 166	Pre-Calculus	GT-MA1	SCI 156	Integrated Science II: Earth & Life Science, with Lab	GT-SC1
MAT 201	Calculus I	GT-MA1	SOC 101	Introduction to Sociology	GT-SS3
MAT 202	Calculus II	GT-MA1	SOC 102	Introduction to Sociology II	GT-SS3
MAT 203	Calculus III	GT-MA1	SOC 205	Sociology of Family Dynamics	GT-SS3
MAT 204	Calculus III/Engineering Apps	GT-MA1	SOC 207	Environmental Sociology	GT-SS3
MAT 215	Discrete Mathematics	GT-MA1	SOC 215	Contemporary Social Problems	GT-SS3
MAT 261	Diff Eq/with Engineering Apps	GT-MA1	SOC 216	Sociology of Gender	GT-SS3
MAT 265	Differential Equations	GT-MA1	SOC 218	Sociology of Diversity	GT-SS3
MET 150	General Meteorology, with Lab	GT-MA1	SOC 220	Sociology of Religion	GT-SS3
MUS 120	Music Appreciation	GT-AH1	SOC 231	Sociology of Deviant Behavior	GT-SS3
MUS 122	Music History: Early Romantic-Present	GT-AH1	SOC 237	Sociology of Death and Dying	GT-SS3
MUS 123	Survey of World Music	GT-AH1	SPA 211	Spanish Language III	GT-AH4
MUS 125	History of Jazz	GT-AH1	SPA 212	Spanish Language IV	GT-AH4
NRE 251	General Oceanography, with Lab	GT-SC1	THE 105	Theatre Appreciation	GT-AH1
PHI 111	Introduction to Philosophy	GT-AH3	THE 108	Theatre Script Analysis	GT-AH1
PHI 112	Ethics	GT-AH3	THE 211	Dev. of Theatre: Greek-Renaissance	GT-AH1
PHI 113	Logic	GT-AH3	THE 212	Dev. of Theatre: Restoration-Modern	GT-AH1
PHI 114	Comparative Religions	GT-AH3	THE 215	Playwriting	GT-AH1
PHI 115	World Religions West	GT-AH3	WST 200	Introduction to Women Studies	GT-SS3
PHI 116	World Religions East	GT-AH3	WST 225	Women and Social Action	GT-SS3
PHI 214	Philosophy of Religion	GT-AH3	WST 240	Goddesses & Women of the Anc. World	GT-SS3
PHI 218	Environmental Ethics	GT-AH3	WST 249	Women's Sexuality	GT-SS3
PHI 220	Philosophy of Death and Dying	GT-AH3			

GENERAL INFORMATION

FALL 2025

Semester Calendar

Please pay special attention to the dates that classes begin and end. Note that arriving late or leaving early may impact your grades.

Credit Hours

For Institutional Scholarships, students must be registered in 15 credit hours. Federal Financial Aid recognizes a student carrying 12 credit hours to be full time.

Arts and Sciences students may not take more than 18 credit hours without approval from the Dean of Instruction.

Course Cancellations

The College reserves the right to cancel programs or courses, to change instructors, and to change times or locations of classes. The Vice President of Academic Affairs will have current, up-to-date information on scheduled classes.

Drops, Withdrawals & Repeating a Course

It's important to know the drop and withdrawal dates for all your classes. The dates are listed on the academic calendar or your individual course syllabus. What's the difference between "drop" and "withdraw"? If you drop a class before the census date, you will not have a financial obligation and you will not use College Opportunity Fund (COF) credits. You can withdraw between the census and withdrawal dates. It won't affect your grade point average, however, you will have a financial obligation, and you will use COF credits.

It is the student's responsibility to drop or withdraw from classes. You can withdraw from courses for the semester you are enrolled in on the student portal. Look at your detailed class schedule available on the Student tab of your Trinidad State Portal for drop and withdraw deadlines specific to each class. It is recommended that you speak with an advisor prior to dropping or withdrawing from a course. It is important to check with the business and

financial aid offices regarding any outstanding balances and/or financial consequences.

If you are an online student, please call one of the advising lines at 719-846-5026 or 719-589-7296 or contact your advisor.

If you are on campus and wish to withdraw, you can do so by contacting your advisor or visiting the advising office on either campus.

If a student decides to withdraw from a class after the Census, but before the last 20% of the class, the grade will be recorded as a "W." A "W" is not counted in computing grade point averages. If a student withdraws during the last 20% of the class, a regular grade will be assigned that does count in computing grade point averages.

A student who earns a grade of D, F, or U may repeat the course once for the purpose of improving the grade point average (GPA). Both grades earned will be entered on the transcript; however, only the highest grade will be counted in calculating the cumulative grade point average. Duplicate credit is not granted for repeating a course.

Tuition Refunds

If a student officially drops from classes prior to the class Census date, there will be no financial obligation. If the student withdraws after the census date, they will be obligated for the cost of the class(es). The College reserves the right to cancel course offerings. Course cancellations will result in a refund of paid tuition.

Registration Deadline

The deadline for registering for classes is the first Friday of class or as designated in the TSC schedule.

Students requesting to register after the deadline date must obtain approval from the Dean of Instruction for late registration authorization.

Tuition Classification

Colorado law requires that students be classified as in-state or out-of-state for tuition

purposes. Tuition classification is based upon information supplied on the application for admission.

Students previously classified as out-of-state may have their classification changed through a Tuition Classification Petition process. Petitions and information concerning documentation may be obtained in the Trinidad campus Registrar's Office or the Valley Campus Admissions Office. Petition applications must be received by either the Registrar's Office or Admissions Office by the first Friday of class each semester. The tuition classification officer must request and maintain adequate documentation to support any applicant's claim for change in status. The policy for tuition classification is outlined in the Colorado Community College System (CCCS) System Procedure 4-40. For more information, go to <https://cccs.edu/policies-and-procedures/system-presidents-procedures/sp-4-40-in-state-tuition-classification/>.

Deadline:

Students have until the first Friday of each semester to submit a petition for change in Tuition Classification. Once the petition is submitted, the College will make a determination by census date.

Tuition Classification Appeal Procedure:

When a decision is rendered and the student is not in agreement with the decision, the student may appeal the decision to the "Student Affairs Committee" by contacting the Dean of Student Retention and Completion. The student will be required to present supporting documentation to a panel of institutional representatives for review and resolution. The student will be notified of the decision made by the appeals panel and the reasons behind the decision. The decision of the appeals committee is final.

Check Requirements

To earn a degree, students must satisfy all course and curriculum requirements for the program under which they are registered and attain a cumulative grade point average of 2.0 or higher.* (* Although a "D" is considered a passing grade, "D's" are not calculated as an earned course toward a degree.) In addition, basic skills courses do not count toward a

GENERAL INFORMATION (continued)

degree. Use the TSC Portal to access Degree Works. Degree Works is a tool available to all students. It provides information on degree progress, required courses and time to completion. Familiarize yourself with the provisions and regulations pertaining to your program. See an Advisor when in doubt. TSC will make every effort to assist you in meeting requirements for graduation.

Final responsibility, however, rests with the student.

If you have completed college courses at a location other than Trinidad State, an official transcript must be sent directly to Trinidad State from the institution where the credits were earned. College transcripts will be evaluated prior to registration to ascertain acceptable credits that apply to the student's program of study. Courses for which the student has earned a grade of "D" or "F" will not be accepted for credit. Students with a GPA below 1.5 may be admitted on academic probation.

In determining academic standing while attending TSC, the GPA of a transfer student is computed on the basis of credits attempted at Trinidad State College only and will not include credits and grade points earned at other colleges.

Up to 45 credits earned at regionally accredited colleges or universities or other approved educational institutions may be applied toward fulfilling TSC program requirements. Please contact the Registrar at 719-846-5550 for more information about accepted transfer credits.

Prior Learning Assessment

The Prior Learning Assessment program, or PLA program, allows students to earn credit for learning that occurs outside the sponsorship of accredited post-secondary education institutions. PLA is not awarded for experience but for college-level learning which entails knowledge, skills, and competencies that students have obtained as a result of their prior learning experiences. Contact the Registrar at 719-846-5550 for more information about how to be awarded prior learning credit.

Transfer of credit for vocational courses are determined by the Dean of Instruction. Contact the Dean at 719-846-5524 on the Trinidad

Campus or 719-589-7064 on the Valley Campus for more information about how to receive vocational course credit.

Residence Halls

There are four residence halls on the Trinidad Campus to house students. (One residence hall will be off-line during academic 2022-2023 for renovation.) The residence halls are staffed with housing employees and a support staff of residence assistants. Students living in the residence halls are required to have a meal plan through the dining hall. The food service company, Sodexo, strives to serve the students with a variety of menus, quality service, and unlimited seconds for most meals. For more information about housing go to: <https://trinidadstate.edu/residence-life/index.html>

Immunization Requirements

Colorado Law (Board of Health rule 6 CCR 1009-2) requires that all full-time students born after January 1, 1957 show proof of immunization against measles, mumps, and rubella. Students residing in student housing are also required to show proof of immunization against meningococcal disease and COVID-19 at the time of housing check in. Certification and waiver forms are available online on the Student Life Housing link under immunization link or at the Student Services Office. The COVID-19 vaccination is not required as a condition of enrollment at the College. The College will provide students with a list of local providers offering the COVID-19 vaccine at no cost.

Student Health Insurance

TSC does not require health insurance for non-athlete students. However, all student athletes must show proof of a student health insurance plan. Trinidad State encourages all students to carry health insurance. For information on student insurance, see the Student Services Office on your campus.

International Students are required to provide evidence of insurance in accordance with the International Student Application process.

TSC Notification System

The TSC Notification System provides text messages, phone messages and email

notices regarding campus closures, campus emergencies and student notifications.

TSC uses the notification system to communicate with the campus community in the event of a crisis, emergency or timely warning. To confirm accurate contact information, login to the TSC Portal and click on the Notify Me link.

Student Complaints

Students or prospective students who wish to file a complaint related to accreditation or grievance may submit a formal written Student Grievance in the Student Services Office of either campus, or at 600 Prospect Street, Berg Office 210, Trinidad, Colorado 81082, or by going online and filling out the form electronically at <https://trinidadstate.edu/students-current/complaints.html>

Complaints regarding accreditation can also be made by contacting the Higher Learning Commission 230 North La Salle Street, Suite 7-500, Chicago, IL 60604, telephone: 1-800-621-7440 <https://www.hlcommission.org/Students-Communities/complaints.html>

Military/Veterans and Their Families

Trinidad State College takes pride in being able to meet the educational needs of military service members, their families and veterans. The college is approved by the Colorado State Approving Agency for Veterans Education. Military tuition assistance, veteran's education benefits, and veteran's vocational rehabilitation are administered by the Financial Aid Office on both campuses.

Each semester, active duty military members and veterans and /or beneficiaries using or wanting to use educational benefits must report to the Financial Aid Office after completing the enrollment process. To maintain educational benefits in good standing students must immediately inform the Financial Aid Office if you:

- drop, add or audit classes;
- stop attending classes;
- have a class canceled, withdraw or are withdrawn from classes or the college;
- are unable to attend classes; or
- make any changes to your enrollment status.

GENERAL INFORMATION (continued)

TSC students using a military benefit must complete paperwork with the TSC Financial Aid Office each semester. To make an appointment to review your benefits, verification, intent to register or related questions, contact Financial Aid at 719-846-5017. For more information, visit the TSC website for Veteran Benefits or stop by the Financial Aid Office on your campus.

Student Bill of Rights

The Colorado Student Bill of Rights focuses on various aspects of student academic life including advising, transferability of credits, and degree completion.

One segment of the Student Bill of Rights notes that a student may formalize a plan to obtain a degree in two years. Trinidad State College supports this timeline for graduation by publishing program pathway guidelines under which a full-time student may expect to graduate or complete and provides degree checklists through the Degree Works tool on the student portal. Program pathways are available online at <https://trinidadstate.edu/pathways/> and degree check on the TSC portal.

There are some majors, which may require additional degree requirements as recognized by the Colorado Department of Higher Education. For more information, or to read the Colorado Student Bill of Rights, go to <https://cdhe.colorado.gov/what-student-bill-rights> or see your Advisor in the on either campus.

Student Rights/FERPA

The Family Educational Rights and Privacy Act (FERPA) of 1974 restricts the release of student information to the public without the consent of the student, except for directory information. Directory information includes name, major field of study, enrollment status, dates of enrollment, degrees and honors earned, participation in officially recognized activities and sports. Additional items for college athletes are height, weight and high school attended. The Solomon Amendment requires institutions receiving federal funds to provide additional directory information that includes address and phone number of enrolled students to the US Military. Directory information is limited to the current academic

year only. If a student does not wish TSC to release the directory information, a written request must be submitted in the Student Services Office before the end of the first week of classes. Your request will remain in effect until you formally cancel it. For more information, contact the Registrar directly at 719-846- 5550 for special accommodations.

Jeannie Clery Disclosure of Campus Security Policy and Campus Crime Statistics Act.

The Clery Act Disclosure and TSC Campus Crime Statistics are accessible on the TSC Website: <https://trinidadstate.edu/safe-campus/>. Hard copies are also available through the Student Services Office on each campus. Sexual assault protocols and victims' rights provisions are described on the safe campus link on the TSC website at <https://trinidadstate.edu/safe-campus/>. Victims are encouraged to report. Help is available.

Sex offender information is available at Colorado's Convicted Sex Offender website: <https://apps.colorado.gov/apps/dps/sor/>

Notification to the campus community will be sent following the confirmation of a significant emergency or dangerous situation involving an immediate threat to the health or safety of students or staff. TSC uses the Notify Me system for this notification.

In an emergency, Dial 911. Report crimes, violations, accidents, suspicious persons and incidents to the Campus Resource Officer on your campus or the Dean of Student Retention and Completion at 719-846-5458.

Return of Title IV Federal Financial Aid

When a Title IV Financial Aid recipient completely withdraws from TSC prior to the end of the term, a refund of the aid will be calculated. The calculation will be based on the number of days attended compared to the total number of days in the semester.

Withdrawal after 60% of the term is not subject to the return calculation. Aid used for tuition, fees, books, and room/board will be refunded by both the student and the College. For a complete outline of the return of the Title IV process please go to <https://trinidadstate.edu/fia/return4.html> or see the TSC Catalog.

Non-Discrimination

The College prohibits and will not tolerate discrimination or harassment that violates federal, state law, or Board Policy 3-120 or Board Policy 4-120. The College does not discriminate on the basis of gender (or gender identity), sex, race, color, age, creed, national or ethnic origin, genetic information, physical or mental disability, veteran status, pregnancy status, religion or sexual orientation.

The College complies with Titles VI and VII of the Civil Rights Act of 1964, the Civil Rights Act of 1991, the Education Amendments of 1972 (Title IX), the Age Discrimination in Employment Act, the Rehabilitation Act of 1973, the Americans with Disabilities Act, Pregnancy Discrimination Act of 1978, Vietnam Era Veterans Readjustment Assistance Act of 1974, Executive Order 11246, and sections 24-34- 301, C.R.S. et seq., The Genetic Information Nondiscrimination Act of 2008 (Pub.L. 110-233, 122 Stat. 881, enacted May 21, 2008, GINA).

For information regarding civil rights or grievance procedures, contact: Title IX Compliance/Equal Opportunity Officer. Yvette Atencio, Human Services Director, 600 Prospect Street, Trinidad, CO 81082 Phone: (719) 846-5538 or email yvette.atencio@trinidadstate.edu.

Complaints may also be filed with the Legal Affairs office of the Colorado Community College System, 9101 E. Lowry Blvd., Denver, Colorado 80230-6011; or the Office for Civil Rights, U.S. Department of Education, Region VIII, Federal Office Building, 1244 Speer Blvd., Suite 310, Denver, Colorado, 80204.

Disability Services

Reasonable accommodations for students will be provided upon request for persons with disabilities. In accordance with the Americans with Disabilities Act (ADA), Trinidad State College will provide accommodations for qualifying students with disabilities. To request an accommodation, contact the Special Populations Coordinator at 719-846-5624 on the Trinidad Campus Berg 209 or call 719-589-7067 on the Valley Campus Room 104.

GENERAL INFORMATION (continued)

State Authorization

Trinidad State College is currently working cooperatively with higher education authorities in all states and other U.S. jurisdictions to ensure compliance with state authorization requirements that govern the offering of courses in those states, including complaint processes.

Trinidad State College will continue to monitor developments in the jurisdictions in which it enrolls students, and, if authorization or licensure is or becomes necessary, it will obtain approvals or provide notice here of the jurisdictions in which it is not authorized to offer courses or programs.

Currently Trinidad State College has approval to offer courses in the following states:

Alabama, Alaska, Arkansas, Arizona, Colorado, Connecticut, Delaware, District of Columbia, Florida, Georgia, Hawaii, Idaho, Illinois, Iowa, Indiana, Kansas, Kentucky, Louisiana, Maine, Maryland, Michigan, Massachusetts, Minnesota, Mississippi, Missouri, Montana, Nebraska, Nevada, New Hampshire, New Jersey, New Mexico, New York, North Carolina, North Dakota, Oklahoma, Ohio, Oregon, Pennsylvania, Rhode Island, South Carolina, South Dakota, Tennessee, Texas, Utah, Vermont, Virginia, Washington, West Virginia, Wisconsin, and Wyoming.

Trinidad State College is currently NOT authorized to offer courses in the following states:

California

If you are not an on-campus student at Trinidad State College and plan to enroll in distance classes, please check the information provided above to verify that your state has either authorized or exempted our college to offer such classes or programs to you as a resident of that state.

If you reside in an "unauthorized" state and plan to take distance education classes, please note that we are not authorized or exempted to offer distance education classes or programs to you as a resident of an "unauthorized" state.

If you have questions or concerns, please contact the Registrar at 719-846-5550.

Smoking Policy

Smoking is prohibited in all College buildings as directed by the Governor's Executive Order D0036.90. Smoking is also prohibited within 25 feet of doorways and buildings.

Student Right-to-know

In accordance with Title I of Public Law 101-542, information about graduation, persistence and transfer rates are available on the TSC Website at <https://trinidadstate.edu/consumer/> or from the Office

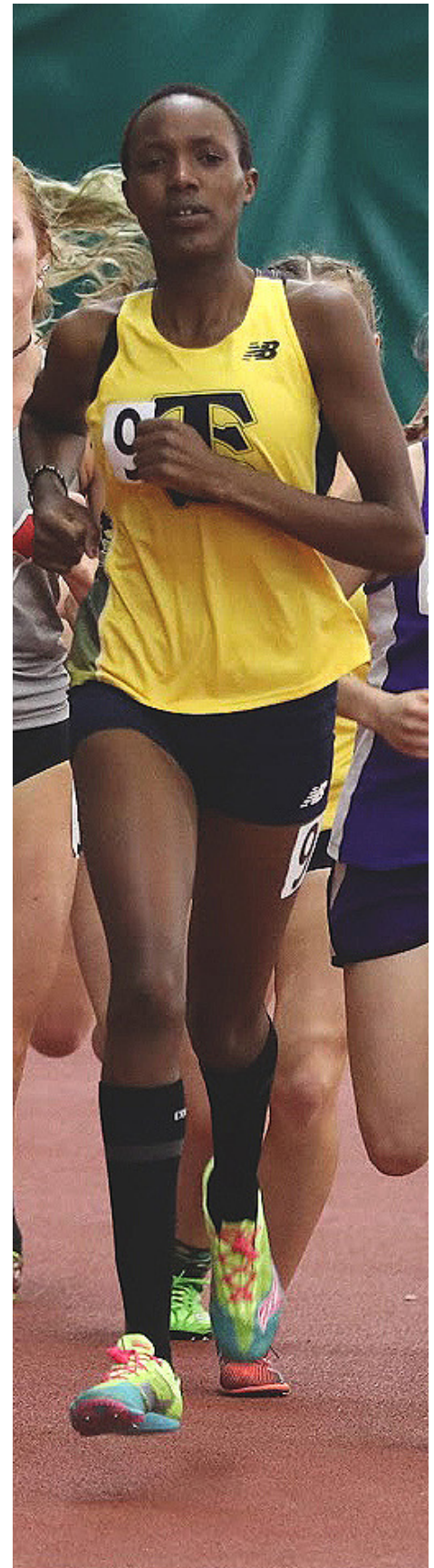
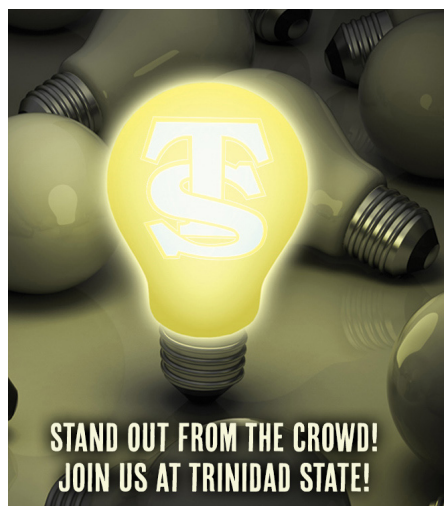
of Institutional Research; additional graduation data is also available at the Colorado Department of Higher Education Website.

Voter Registration Information

TSC fully supports and advocates that students and staff register to vote. Voter Registration forms are available on the Colorado Secretary of State Website at <https://www.coloradosos.gov/voter/pages/pub/home.xhtml>

Consumer Information

Federal regulations require Trinidad State to Provide consumer information to students, prospective students and the campus community about the college and financial aid. For a complete list of consumer information review: <https://trinidadstate.edu/consumer/>.



PHONE NUMBERS

Trinidad Campus

Emergency: 911

Campus Security using an on-campus telephone 9-719-680-2119

Campus Security using an off-campus telephone 719-680-2119

All numbers are Area Code 719

- Admissions : Berg 201, 846-5621
- Advising : Berg 209, 846-5026
- Athletic Director : Boyd 109, 846-5653
- Cashier/Business Office : Berg 209, 846-5547
- Dean of Instruction : Davis 118, 846-5524
- Dean of Instruction : Valley Campus, 589-7064
- Educational Opportunity Center (EOC) : Berg 201, 846-5689
- Human Resources : Berg 101, 846-5538
- Mail Room : Berg Bottom Floor, 846-5498
- Payroll : Berg 101, 846-5570
- Recruiter : Berg 201, 846-5599
- Residence Halls : 719-680-1520
- TRiO Student Support Services : Berg 209, 846-5624 (Academic Support, Advising, Financial Aid, Transfer, Tutoring, and more)
- Testing Center : Berg 201, 846-5657
- Adult Education/GED/ESL : Latuda Hall, 846-5640
- Affirmative Action : Berg 101, 846-5538
- Bookstore : Sullivan Center, 846-5610
- Computer (IT) Help Desk : Davis 202, 846-5663
- Dean of Student Retention & Completion : Berg 201, 846-5458
- Dining Hall : Sullivan Center, 846-5629
- Financial Aid : Berg 209, 846-5017
- Library : 846-5593
- Nursing Department : Davis 118, 846-5524
- Physical Plant : Banta 202, 846-5618
- Registrar : Berg 108, 846-5550
- Student Life : Berg 201, 846-5474
- Veterans Certifying Officer : Valley Campus 104, 589-7045

Valley Campus

Emergency: 911

Campus Security using an on-campus telephone 9-719-221-6398

Campus Security using an off-campus telephone 719-221-6398

All numbers are Area Code 719

- Admissions & Records : Main Room 104, 589-7026
- Advising : Main Room 104, 589-7296
- Comm. & Concurrent Ed : Main Room 202, 589-7064
- Career & Disability Services : Main Room 104, 589-7067
- Human Resources : Main Room 112, 846-5538
- Testing : Trinidad Campus Berg 201, 846-5657
- Tutoring : Main Room 104, 589-7063
- Adult Education/GED/ESL : Main Room 203, 589-7137
- Dean of Instruction : Main Room 202, 589-7064
- Cashier/Business Office : Main Room 104, 589-7026
- Financial Aid : Main Room 104, 589-7045
- Student Life : Trinidad Campus Berg 201, 846-5474
- TRiO Support Services : Main Room 104, 589-7063
- Veterans Certifying Officer : Main Room 104, 589-7045



2024-2025 COURSE SPECIFIC FEES

Course #	Course Name	Fee	Frequency	Explanation
ADE 1035	Small Gasoline Engines	\$22.80	Per Course	Shop supplies and waste disposal fees
AGE 1102	Agriculture Economics	\$10.61	Per Course	Course materials
AGE 2105	Farm and Ranch Management	\$10.61	Per Course	Course materials
AGE 2108	Agriculture Finance	\$10.61	Per Course	Course materials
AGE 2110	Agriculture Marketing	\$10.61	Per Course	Course materials
AGP 1007	Practical Irrigation Mgmt	\$10.61	Per Course	Course materials
AGP 1080	Production Ag Internship	\$10.61	Per Course	Course materials
AGY 1100	General Crop Production	\$10.61	Per Course	Course materials
AGY 2140	Intro Soil Science	\$10.61	Per Course	Course materials
ANT 1004	Archaeology Laboratory: GT-SS3	\$155.91	Per Course	Course materials
ART 1002	Visual Concepts in 2-D Design	\$28.09	Per Course	Course materials
ART 1003	Visual Concepts in 3-D Design	\$28.09	Per Course	Course materials
ART 1110	Art Appreciation: AH1	\$16.00	Per Course	Cost of Materials and Supplies
ART 1201	Drawing I	\$28.09	Per Course	Course materials
ART 1202	Drawing II	\$28.09	Per Course	Course materials
ART 1203	Figure Drawing I	\$28.09	Per Course	Course materials
ART 1301	Painting I	\$28.09	Per Course	Course materials
ART 1302	Painting II	\$28.09	Per Course	Course materials
ART 1501	Print Making	\$28.09	Per Course	Course materials
ART 1703	Ceramics I	\$28.09	Per Course	Course materials
ASC 1100	Animal Sciences	\$10.61	Per Course	Course materials
ASC 2105	Live Animal/Carcass Evaluation	\$31.20	Per Course	Course materials
ASC 2125	Feeds and Feeding	\$10.61	Per Course	Course materials
ASE 1001	Auto Shop Orientation	\$6.11	Per Course	Course materials
ASE 1002	Intro to the Automotive shop	\$6.11	Per Course	Course materials
ASE 1010	Brakes I	\$12.35	Per Course	Shop supplies and waste disposal fees
ASE 1011	Auto Brake II	\$12.35	Per Course	Shop supplies and waste disposal fees
ASE 1020	Basic Auto Electricity	\$6.11	Per Course	Course materials
ASE 1022	Auto Elec Safety Systems	\$6.11	Per Course	Course materials
ASE 1023	Starting & Charging Sys	\$6.11	Per Course	Course materials
ASE 1030	General Engine Diagnosis	\$12.35	Per Course	Shop supplies and waste disposal fees
ASE 1032	Ignition System Diag. & Repair	\$6.11	Per Course	Course materials
ASE 1034	Autofuel & emissions Syst I	\$12.35	Per Course	Shop supplies and waste disposal fees
ASE 1040	Steering and Suspension I	\$12.35	Per Course	Shop supplies and waste disposal fees
ASE 1041	Suspension and Steering II	\$12.35	Per Course	Shop supplies and waste disposal fees
ASE 1050	Man Drv Trn & Axle	\$12.35	Per Course	Shop supplies and waste disposal fees
ASE 1052	Man Trans/Transaxles/Clutch II	\$12.35	Per Course	Shop supplies and waste disposal fees
ASE 1060	Auto Engine Repair	\$12.35	Per Course	Shop supplies and waste disposal fees
ASE 1062	Auto Engine Service	\$12.35	Per Course	Shop supplies and waste disposal fees
ASE 2010	Auto Pwr/ABS Brake Systems	\$12.35	Per Course	Shop supplies and waste disposal fees
ASE 2021	Auto/Diesel Body Electrical	\$6.11	Per Course	Course materials
ASE 2031	Auto Comp & Ignition Sys	\$6.11	Per Course	Course materials
ASE 2033	Auto Fuel Injection /Emissions	\$12.35	Per Course	Shop supplies and waste disposal fees
ASE 2040	Suspension and Steering III	\$12.35	Per Course	Shop supplies and waste disposal fees
ASE 2050	Auto Trans/Transaxle Service	\$12.35	Per Course	Shop supplies and waste disposal fees
ASE 2051	Auto Trans/Transaxle Repair	\$12.35	Per Course	Shop supplies and waste disposal fees
ASE 2064	Intro to HVAC Systems	\$12.35	Per Course	Shop supplies and waste disposal fees
ASE 2065	HVAC Systems	\$12.35	Per Course	Shop supplies and waste disposal fees
AVT 1060	Introduction to Unmanned Aircraft Sy	\$78.80	Per Course	Course Materials/Transportation/Maintenance
BIO 1004	Biology: A Human Approach	\$36.40	Per Course	Expendable lab materials and cadavers
BIO 1005	Science of Biology w/Lab: SC1	\$21.22	Per Course	Expendable laboratory materials and cadavers
BIO 1052	Willife Biology	\$20.00	Per Course	Cost of supplies
BIO 1111	Gen College Biology I/Lab: SC1	\$26.52	Per Course	Expendable laboratory materials and cadavers
BIO 1112	Gen College Biology II/Lab: SC1	\$26.52	Per Course	Expendable laboratory materials and cadavers
BIO 2101	Human Anatomy&Phys w/Lab I: SC1	\$36.40	Per Course	Expendable laboratory materials and cadavers
BIO 2102	Human Anatomy&Phys w/Lab II: SC	\$36.40	Per Course	Expendable laboratory materials and cadavers
BIO 2104	Microbiology w/Lab: SC1	\$42.44	Per Course	Expendable laboratory materials and cadavers
BIO 2120	General Zoology w/Lab: SC1	\$28.36	Per Course	Expendable laboratory materials and cadavers
BIO 2121	Botany w/Lab: SC1	\$22.87	Per Course	Expendable laboratory materials and cadavers
BUS 1015	Introduction to Business	\$5.31	Per Course	workbook and course materials
BUS 2017	Business Communication/Report Wr	\$5.31	Per Course	workbook and course materials
CHE 1011	Introduction to Chemistry I	\$5.31	Per Course	lab supplies
CHE 1011	Introduction to Chemistry I	\$5.31	Per Course	chemical disposal
CHE 1011	Introduction to Chemistry I w/Lab: GT	\$27.82	Per Course	Course materials
CHE 1012	Introduction to Chemistry II	\$5.31	Per Course	lab supplies
CHE 1012	Introduction to Chemistry II	\$5.31	Per Course	chemical disposal

COURSE SPECIFIC FEES (continued)

Course #	Course Name	Fee	Frequency	Explanation
CHE 1012	Introduction to Chemistry II w/Lab: G	\$27.82	Per Course	Course materials
CHE 1111	Gen College Chem II/Lab: SC1	\$49.12	Per Course	Expendable laboratory materials
CHE 1112	Gen College Chem II/Lab: SC1	\$49.12	Per Course	Expendable laboratory materials
COS 1003	Shampoo/Rinses/Conditioners I	\$10.39	Per Course	Course materials
COS 1010	Introduction to Hair Coloring	\$10.39	Per Course	Course materials
COS 1011	Intermediate: Hair Coloring	\$10.39	Per Course	Course materials
COS 1030	Introduction to Hair Styling	\$10.39	Per Course	Course materials
COS 1031	Intermediate I Hair Styling	\$10.39	Per Course	Course materials
COS 1040	Introduction to Chemical Texture	\$10.39	Per Course	Course materials
COS 1041	Intermediate I Chemical Texture	\$10.39	Per Course	Course materials
COS 2003	Shampoos/Rinses/ Conditioners II	\$10.39	Per Course	Course materials
COS 2010	Intermediate II Hair Coloring	\$10.39	Per Course	Course materials
COS 2011	Advanced Hair Coloring	\$10.39	Per Course	Course materials
COS 2030	Intermediate II Hair Styling	\$10.39	Per Course	Course materials
COS 2031	Advanced Hair Styling	\$10.39	Per Course	Course materials
COS 2040	Intermediate II Chemical Texture	\$10.39	Per Course	Course materials
COS 2041	Advanced Chemical Texture	\$10.39	Per Course	Course materials
COS 2060	Inter II: Disinfe/Sanit/Safety	\$9.00	Per Course	Malpractice insurance
DEA 1023	Dental Assisting	\$220.54	Per Course	Course materials
DEA 1023	Dental Assisting	\$9.00	Per Course	Malpractice insurance
DPM 1003	Diesel Engines I	\$20.40	Per Course	Shop supplies and waste disposal fees
DPM 1005	Heavy Duty Powertrains I	\$20.40	Per Course	Shop supplies and waste disposal fees
DPM 1006	Diesel Fuel Systems	\$20.40	Per Course	Shop supplies and waste disposal fees
DPM 1021	Hydraulic Systems I	\$20.40	Per Course	Shop supplies and waste disposal fees
DPM 1022	Hydraulic Systems II	\$20.40	Per Course	Shop supplies and waste disposal fees
DPM 1077	Lab Experience I	\$20.40	Per Course	Shop supplies and waste disposal fees
DPM 2003	Diesel Engines II	\$20.40	Per Course	Shop supplies and waste disposal fees
DPM 2005	Heavy Duty Powertrains II	\$20.40	Per Course	Shop supplies and waste disposal fees
DPM 2006	Heavy Duty Brakes I	\$20.40	Per Course	Shop supplies and waste disposal fees
EIC 1102	Safety & Industry Certifications	\$127.50	Per Course	OSHA/Flagger Training
EIC 1103	Electrical Principles and Applied	\$72.76	Per Course	Math Course materials
EIC 1231	Overhead Power Systems	\$265.20	Per Course	Climbing poles
EIC 1232	Hotline Procedures	\$244.44	Per Course	Cost of materials
EMS 1021	EMT Fundamentals	\$9.00	Per Course	Malpractice insurance
EMS 1021	EMT Fundamentals	\$107.69	Per Course	Supplies
EMS 1125	AEMT Fundamentals	\$9.00	Per Course	Malpractice insurance
EMS 1125	AEMT Fundamentals	\$153.00	Per Course	Simulation maintenance and service
EMS 1125	AEMT Fundamentals	\$153.00	Per Course	Course materials
EMS 1132	EMT IV/IO	\$105.68	Per Course	Consumable supplies
EMS 2025	Paramedic Fundamentals	\$9.00	Per Course	Malpractice insurance
EMS 2025	Paramedic Fundamentals	\$153.00	Per Course	Course supplies
EMS 2025	Paramedic Fundamentals	\$204.00	Per Course	Tracking program for compliance for national
EMS 2025	Paramedic Fundamentals	\$459.00	Per Course	Simulation maintenance and service
EMS 2031	Paramedic Cardiology	\$459.00	Per Course	Simulation maintenance and service
ENG 1021	English Composition I : CO1	\$10.39	Per Course	Brainfuse online tutoring platform
EST 1010	Introduction to Facials and Skin	\$10.39	Per Course	Course materials
EST 1011	Intermediate Facials and Skin Care	\$10.39	Per Course	Course materials
EST 2010	Advanced Massage and Skin Care	\$10.39	Per Course	Course materials
EST 2011	Facial Make-up	\$10.39	Per Course	Course materials
EST 2012	Hair Removal	\$10.39	Per Course	Course materials
GUR 1001	NRA Home Firearm Safety Course	\$10.00	Per Course	Cost of range fees
GUR 1001	NRA Home Firearm Safety Course	\$12.47	Per Course	Cost of materials
GUR 1006	NRA Basic Pistol Shooting	\$10.00	Per Course	Cost of range fees
GUR 1006	NRA Basic Pistol Shooting	\$16.00	Per Course	Cost of materials
GUR 1007	NRA Basic Shotgun Shooting	\$15.60	Per Course	Cost of materials
GUR 1007	NRA Basic Shotgun Shooting	\$14.56	Per Course	Cost of materials
GUR 1008	Muzzleloading Pistol Shooting	\$10.00	Per Course	Cost of range fees
GUR 1008	Muzzleloading Pistol Shooting	\$14.56	Per Course	Cost of materials
GUR 1009	Muzzleloading Rifle Shooting	\$10.00	Per Course	Cost of range fees
GUR 1009	Muzzleloading Rifle Shooting	\$14.56	Per Course	Cost of materials
GUR 1010	NRA Basic Rifle Shooting	\$10.00	Per Course	Cost of range fees
GUR 1010	NRA Basic Rifle Shooting	\$15.60	Per Course	Cost of materials
GUR 1011	Muzzleloading Shotgun Shooting	\$15.60	Per Course	Cost of materials
GUR 1011	Muzzleloading Shotgun Shooting	\$19.75	Per Course	Cost of materials
GUR 1012	NRA Personal Protection Course	\$10.00	Per Course	Cost of range fees
GUR 1012	NRA Personal Protection Course	\$23.91	Per Course	Cost of materials

COURSE SPECIFIC FEES (continued)

Course #	Course Name	Fee	Frequency	Explanation
GUR 1020	NRA Range Safety Officer	\$10.00	Per Course	Cost of range fees
GUR 1020	NRA Range Safety Officer	\$24.74	Per Course	Cost of materials
GUR 2000	NRA Basic Instruction Training	\$10.00	Per Course	Cost of range fees
GUR 2000	NRA Basic Instruction Training	\$12.59	Per Course	Cost of materials
GUR 2001	Firearm Safety Instructor	\$10.00	Per Course	Cost of range fees
GUR 2001	Firearm Safety Instructor	\$12.47	Per Course	Cost of materials
GUR 2001	Firearm Safety Instructor	\$14.76	Per Course	Cost of materials
GUR 2006	NRA Pistol Instructor	\$10.00	Per Course	Cost of range fees
GUR 2006	NRA Pistol Instructor	\$16.11	Per Course	Cost of materials
GUR 2006	NRA Pistol Instructor	\$10.39	Per Course	Cost of materials
GUR 2007	NRA Shotgun Shooting Inst	\$15.60	Per Course	Cost of materials
GUR 2007	NRA Shotgun Shooting Inst	\$14.56	Per Course	Cost of materials
GUR 2007	NRA Shotgun Shooting Inst	\$10.39	Per Course	Cost of materials
GUR 2008	NRA Muzzleloading Instructor	\$10.39	Per Course	Cost of materials
GUR 2008	NRA Muzzleloading Instructor	\$14.56	Per Course	Cost of materials
GUR 2008	NRA Muzzleloading Instructor	\$14.56	Per Course	Cost of materials
GUR 2010	Basic Rifle Shooting Instruc	\$10.00	Per Course	Cost of range fees
GUR 2010	Basic Rifle Shooting Instruc	\$15.60	Per Course	Cost of materials
GUR 2010	Basic Rifle Shooting Instruc	\$18.71	Per Course	Cost of materials
GUR 2012	NRA Personal Protection Instr	\$10.00	Per Course	Cost of range fees
GUR 2012	NRA Personal Protection Instr	\$23.91	Per Course	Cost of materials
GUR 2012	NRA Personal Protection Instr	\$20.30	Per Course	Cost of materials
GUR 2020	NRA Chief Range Safety Officer	\$10.00	Per Course	Cost of range fees
GUR 2020	NRA Chief Range Safety Officer	\$24.74	Per Course	Cost of materials
GUR 2020	NRA Chief Range Safety Officer	\$27.02	Per Course	Cost of materials
GUS 1000	Orientation and Firearms safety	\$300.00	Per Course	Technology - student i-pads
GUS 1010	Firearms Bench Metal	\$32.21	Per Course	Cost of materials
GUS 1012	Firearms Machine Shop I	\$172.76	Per Course	Cost of materials
GUS 1027	Firearms Machine Shop II	\$169.74	Per Course	Cost of materials
GUS 2005	Firearms Machine Shop III	\$172.76	Per Course	Cost of materials
HEQ 1040	Heavy Equipment Operations	\$76.50	Per Course	Equipment repairs
HEQ 2020	Motor Grader I	\$76.50	Per Course	Equipment repairs
HEQ 2020	Motor Grader I	\$51.00	Per Course	Fuel and Maintenance
HEQ 2021	Motor Grader II	\$108.93	Per Course	Cost of materials
HEQ 2025	Backhoe I	\$76.50	Per Course	Equipment repairs
HEQ 2025	Backhoe I	\$51.00	Per Course	Fuel and Maintenance
HEQ 2026	Backhoe II	\$108.93	Per Course	Cost of materials
HEQ 2030	Hydraulic Excavator	\$76.50	Per Course	Equipment repairs
HEQ 2030	Hydraulic Excavator	\$51.00	Per Course	Fuel and Maintenance
HEQ 2040	Basic Bulldozer I	\$51.00	Per Course	Fuel and Maintenance
HEQ 2040	Bulldozer I	\$76.50	Per Course	Equipment repairs
HEQ 2042	Skid Steers	\$76.50	Per Course	Equipment repairs
HEQ 2042	Skid Steers	\$51.00	Per Course	Fuel and Maintenance
HEQ 2046	Front End Loader II	\$51.00	Per Course	Fuel and Maintenance
HEQ 2046	Front End Loaders	\$76.50	Per Course	Equipment repairs
HEQ 2050	On-Road Dump Trucks	\$108.93	Per Course	Cost of materials
HLT 1060	Greenhouse Management	\$10.61	Per Course	Course materials
HLT 1101	Introduction to Horticulture	\$10.61	Per Course	Course materials
HLT 2026	Interior Plants	\$10.61	Per Course	Course materials
HWE 1061	Fitness and Wellness	\$5.26	Per Course	Course materials
LEA 1007	Law Enforcement Driving	\$636.47	Per Course	Vehicle Fuel and Maintenance
LEA 1008	Firearms	\$318.24	Per Course	Firearms Range costs - including targets,
MAC 1010	Introduction to Engine Lathe	\$65.43	Per Course	Cost of materials
MAC 1011	Intermediate Engine Lathe	\$65.43	Per Course	Cost of materials
MAC 1020	Intro to Milling Machine	\$65.43	Per Course	Cost of materials
MAC 1020	Intro to Milling Machine	\$65.43	Per Course	Cost of materials
MAC 1021	Intermediate Milling Machine	\$65.43	Per Course	Cost of materials
MAC 1022	Adv Milling Machine Operations	\$65.43	Per Course	Cost of materials
MAN 2026	Principles of Management	\$5.15	Per Course	workbook, course materials and supplies
MAP 1083	Medical Assistant Internship	\$9.00	Per Course	Malpractice Insurance
MAP 1083	Medical Assistant Internship	\$73.48	Per Course	Course materials
MAP 2038	Medical Assisting Laboratory	\$95.63	Per Course	Course materials
MAP 2040	Medical Assist Clinical Skills	\$102.13	Per Course	Course materials
MAP 2069	Review- Medical Asst Natl Exam	\$161.11	Per Course	Course materials
MAP 2069	Review- Medical Asst Natl Exam	\$76.91	Per Course	Cost of supplies
MAT 1240	Math for Liberal Arts: MA1	\$10.39	Per Course	Brainfuse online tutoring platform

COURSE SPECIFIC FEES (continued)

Course #	Course Name	Fee	Frequency	Explanation
MAT 1260	Intro to Statistics: MA1	\$10.39	Per Course	Brainfuse online tutoring platform
MAT 1340	College Algebra : MA1	\$10.39	Per Course	Tutor fee (online platform)
MUS 1041	Private Instruction: (specify)	\$106.01	Per Course	Private instruction fee
MUS 1042	Private Instruction: (specify)	\$106.01	Per Course	Private instruction fee
MUS 1043	Private Instruction: (specify)	\$106.01	Per Course	Private instruction fee
MUS 1044	Private Instruction: (specify)	\$106.01	Per Course	Private instruction fee
NAT 1010	Introduction to Manicures & Pedicure	\$10.71	Per Course	Course materials
NAT 1011	Intermediate Manicures & Pedicures	\$10.71	Per Course	Course materials
NAT 2010	Advanced Manicures & Pedicures	\$10.71	Per Course	Course materials
NAT 2011	Application of Artificial Nails	\$10.71	Per Course	Course materials
NUA 1001	Nurse Aide Health Care Skills	\$9.00	Per Course	Malpractice Insurance
NUA 1001	Nurse Aide Health Care Skills	\$188.70	Per Course	Supplies
NUA 1070	Nurse Aide Clinical Experience	\$37.97	Per Course	Materials
NUR 1006	Med-Surg Nursing Concepts	\$34.58	Per Course	Supplies
NUR 1006	Med-Surg Nursing Concepts	\$35.08	Per Course	Materials
NUR 1006	Med-Surg Nursing Concepts	\$167.76	Per Course	Testing
NUR 1009	Fundamentals of Nursing	\$9.00	Per Course	Malpractice Insurance
NUR 1009	Fundamentals of Nursing	\$163.13	Per Course	Testing
NUR 1009	Fundamentals of Nursing	\$172.85	Per Course	Supplies
NUR 1009	Fundamentals of Nursing	\$265.11	Per Course	Simulation
NUR 1050	Nur Care of Obstetric and Pediatric	\$38.75	Per Course	Clinicals
NUR 1069	Transition into Professional Nrsng	\$250.20	Per Course	Testing
NUR 1089	Transition from LPN to ADN	\$165.00	Per Course	Testing
NUR 2001	IV Therapy for LPN	\$9.00	Per Course	Malpractice Insurance
NUR 2001	IV Therapy for LPN	\$102.00	Per Course	Consumable Supplies
NUR 2006	Adv Concepts of Med/Surg NSG I	\$9.00	Per Course	Malpractice Insurance
NUR 2006	Adv Concepts of Med/Surg NSG I	\$150.71	Per Course	Supplies
NUR 2006	Adv Concepts of Med/Surg NSG I	\$265.11	Per Course	Simulation
NUR 2011	Psychiatric-Mental Health NSG	\$97.09	Per Course	Clinicals
NUR 2016	Adv Concepts Med-Surg NSG II	\$35.08	Per Course	Supplies
NUR 2016	Adv Concepts Med-Surg NSG II	\$167.76	Per Course	Testing
NUR 2016	Adv Concepts Med-Surg NSG II	\$230.36	Per Course	Boards
NUR 2030	Transition to Professional NSG	\$335.64	Per Course	Testing
NUR 3001	Integration of BSN	\$612.00	Per Course	Simulation maintenance and service
NUR 4008	Legal Ethical	\$9.00	Per Course	Malpractice Insurance
OSH 1310	10HR Constructn Industry Stnds	\$25.50	Per Course	digital access
PHY 1111	Physics: Algebra-Based I	\$10.50	Per Course	Course materials
PHY 1112	Physics: Algebra-Based II	\$10.50	Per Course	Course materials
PHY 2111	Physics: Calculus Based I	\$10.50	Per Course	Course materials
PHY 2112	Physics: Calculus Based II	\$10.50	Per Course	Course materials
RAM 2005	Range Management	\$10.24	Per Course	Course materials
THE 1005	Theater Appreciation: GT-AH1	\$18.36	Per Course	Theater experience
THE 1008	Theatre Script Analysis: AH1	\$10.00	Per Course	Theatre Production Costs
THE 1011	Acting I	\$10.00	Per Course	Theatre Production Costs
THE 1016	Technical Theatre	\$10.00	Per Course	Theatre Production Costs
THE 1029	Introduction to the Entertainment Industr	\$10.00	Per Course	Theatre Production Costs
THE 2011	Development of Theatre Greek - Ren	\$10.00	Per Course	Theatre Production Costs
THE 2012	Development of Theatre Restoration	\$10.00	Per Course	Theatre Production Costs
TMC 1001	Intro to Trails	\$51.00	Per Course	Transportation to field site & field work supplies
TMC 1003	Intro to Trail Maintenance	\$51.00	Per Course	Transportation to field site & field work supplies
TMC 1010	Trail Planning I	\$51.00	Per Course	Transportation to field site & field work supplies
TMC 1020	Trail Design I	\$51.00	Per Course	Transportation to field site & field work supplies
TMC 1030	Trail Construction I	\$102.00	Per Course	Transportation to field site & field work supplies
TMC 1032	Trail Construction II	\$102.00	Per Course	Transportation to field site & field work supplies
TMC 1050	Trails in Challenging Terrain	\$102.00	Per Course	Transportation to field site & field work supplies
TMC 1060	Trail Ops and Maintenance	\$102.00	Per Course	Transportation to field site & field work supplies
UAS 1050	UAS Foundations	\$80.33	Per Course	Course Materials/Transportation/Maintenance
UAS 1051	UAS Applications	\$10.71	Per Course	Course Materials/Transportation/Maintenance
UAS 1052	UAS Personnel	\$10.71	Per Course	Course Materials/Transportation/Maintenance
UAS 1053	UAS Safety Management	\$10.71	Per Course	Course Materials/Transportation/Maintenance
WEL 1021	Structural Welding I	\$193.32	Per Course	Course materials
WEL 1022	Structural Welding II	\$193.33	Per Course	Course materials
WEL 1024	Intro-Gas Tungsten Arc Welding	\$193.33	Per Course	Course materials
WEL 1025	Intro-Gas Metal Arc Welding	\$193.33	Per Course	Course materials
WEL 1035	Tig Welding for Gunsmiths	\$97.54	Per Course	Course materials
WEL 2003	Flux Cored Arc Welding I	\$193.33	Per Course	Course materials

» PLEASE TURN IN YOUR OFFICIAL HIGH SCHOOL TRANSCRIPT TO QUALIFY FOR TSC AUTOMATIC SCHOLARSHIPS

» **President's Scholarship** **3.5 – 4.0 GPA**

Amount: 6 credit hours paid for on-campus learning, in-state tuition per semester

- Criteria:**
- First time degree/certificate – seeking undergraduate student
 - High School/GED GPA 3.5 – 4.0, or have achieved a 1130 or higher score on the SAT
 - Students must carry 15 credit hours per semester Fall/Spring
 - Maintain a cumulative GPA of 3.5 or higher to sustain the scholarship
 - Colorado students must apply for the College Opportunity Fund (COF)
 - Submit official high school transcript to verify eligibility

Duration: Up to four semesters or 60 credit hours based on academic performance

Deadline: Fall Semester ~ September 1 Spring Semester ~ January 5

» **Automatic Merit Scholarship** **3.0 – 3.499 GPA**

Amount: 3 credit hours paid for on-campus learning, in-state tuition per semester

- Criteria:**
- First time degree/certificate – seeking undergraduate student
 - High School /GED 3.0-3.499, or have achieved a 980-1120 or higher score on the SAT
 - Students must carry 15 credit hours per semester Fall/Spring
 - Maintain a cumulative GPA of 3.0 or higher to sustain the scholarship
 - Colorado students must apply for the College Opportunity Fund (COF)
 - Submit official high school transcript to verify eligibility

Duration: Up to four semesters or 60 credit hours based on academic performance

Deadline: Fall Semester ~ September 1 Spring Semester ~ January 5

» **Learn Local Scholarship**

Amount: 3 credit hours paid for on-campus learning, in-state tuition per semester

- Criteria:**
- Scholarship available to students who graduated from a high school in the Trinidad/Alamosa service area counties: Alamosa, Conejos, Costilla, Las Animas, Huerfano, Mineral, Rio Grande, and Saguache.
 - Students must carry 15 credit hours per semester Fall/Spring
 - Colorado students must apply for the College Opportunity Fund (COF)
 - Submit official high school transcript to verify eligibility

Duration: Up to four semesters or 60 credit hours based on academic performance

Deadline: Fall Semester ~ September 1 Spring Semester ~ January 5

» **Trinidad State Scholarships**

For more details or to apply for Trinidad State Automatic Scholarships, contact the TSC Admissions Office at (719) 846-5621 or visit our Scholarship web page at trinidadstate.edu/scholarships

» **Finish Line Scholarship**

Amount: 3 credit hours paid for on-campus learning, in-state tuition

- Criteria:**
- Scholarship available to students who have earned 45 credit hours and in the final semester at Trinidad State
 - Students must carry 15 credit hours for the final semester
 - Colorado students must apply for the College Opportunity Fund (COF)
 - Students must submit a graduation application and demonstrate they are in their last semester of coursework.

Duration: Last semester at Trinidad State College

» **60+ Foundation Scholarships!**

More than 60 scholarships are available through the Trinidad State College Foundation. Scholarships are available for new and/or continuing students who demonstrate academic promise in a particular field of study or skill.

Priority Deadline: First Friday of March.

For more information regarding Foundation Scholarships, call (719) 846-5520.